

Product datasheet for **AP51826PU-N**

GFRAL (C-term) Rabbit Polyclonal Antibody

Product data:

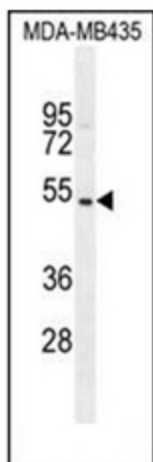
Product Type:	Primary Antibodies
Applications:	FC, IHC, WB
Recommended Dilution:	ELISA: 1/1000. Western Blot: 1/100-1/500. Flow Cytometry: 1/10-1/50. Immunohistochemistry on Paraffin Sections: 1/10-1/50.
Reactivity:	Human
Host:	Rabbit
Isotype:	Ig
Clonality:	Polyclonal
Immunogen:	KLH conjugated synthetic peptide between 366-394 amino acids from the C-terminal region of human GFRAL
Specificity:	This antibody recognizes Human GFRAL (C-term).
Formulation:	PBS containing 0.09% (W/V) Sodium Azide as preservative State: Aff - Purified State: Liquid purified Ig fraction
Concentration:	lot specific
Purification:	Affinity Chromatography on Protein A
Conjugation:	Unconjugated
Storage:	Store undiluted at 2-8°C for one month or (in aliquots) at -20°C for longer. Avoid repeated freezing and thawing.
Stability:	Shelf life: one year from despatch.
Gene Name:	GDNF family receptor alpha like
Database Link:	Entrez Gene 389400 Human Q6UXV0
Synonyms:	C6orf144, UNQ9356/PRO34128
Note:	Molecular Weight: 44518 Da



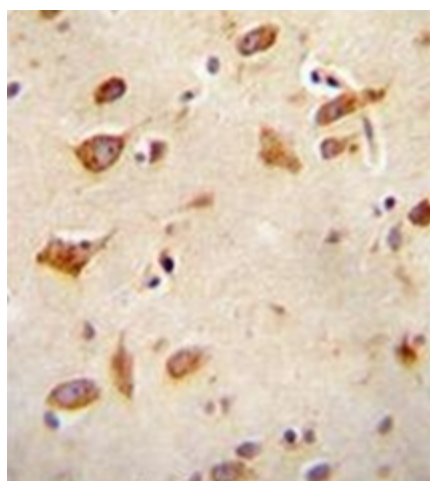
[View online »](#)

Protein Families: Druggable Genome, Transmembrane

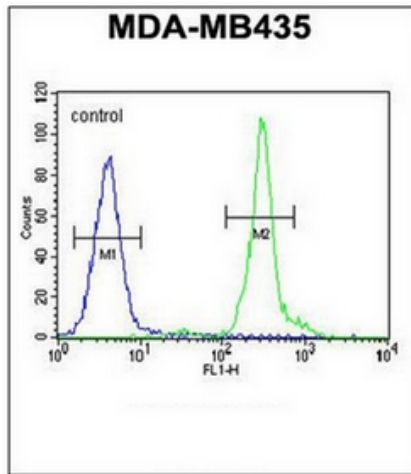
Product images:



Western blot analysis of GFRAL Antibody (C-term) in MDA-MB435 cell line lysates (35ug/lane). This demonstrates the GFRAL antibody detected the GFRAL protein (arrow).



Formalin fixed and paraffin embedded human brain tissue reacted with GFRAL Antibody (C-term) followed by peroxidase conjugation of the secondary antibody and DAB staining.



Flow cytometric analysis of MDA-MB435 cells using GFRAL Antibody (C-term) (right histogram) compared to a negative control cell (left histogram). FITC-conjugated goat-anti-rabbit secondary antibodies were used for the analysis.