

Product datasheet for **AP51825PU-N**

GFR alpha 3 (GFRA3) (Center) Rabbit Polyclonal Antibody

Product data:

Product Type:	Primary Antibodies
Applications:	WB
Recommended Dilution:	ELISA: 1/1000. Western Blot: 1/100-1/500.
Reactivity:	Human
Host:	Rabbit
Isotype:	Ig
Clonality:	Polyclonal
Immunogen:	KLH conjugated synthetic peptide between 115-144 amino acids from the Central region of human GFRA3
Specificity:	This antibody recognizes Human GFRA3 (Center).
Formulation:	PBS containing 0.09% (W/V) Sodium Azide as preservative State: Aff - Purified State: Liquid purified Ig fraction
Concentration:	lot specific
Purification:	Protein A column, followed by peptide affinity purification
Conjugation:	Unconjugated
Storage:	Store undiluted at 2-8°C for one month or (in aliquots) at -20°C for longer. Avoid repeated freezing and thawing.
Stability:	Shelf life: one year from despatch.
Gene Name:	GDNF family receptor alpha 3
Database Link:	Entrez Gene 2676 Human O60609
Background:	GFRA3 is a glycosylphosphatidylinositol(GPI)-linked cell surface receptor and a member of the GDNF receptor family. It forms a signaling receptor complex with RET tyrosine kinase receptor and binds the ligand, artemin.
Synonyms:	GFR-alpha-3, GDNF receptor alpha-3

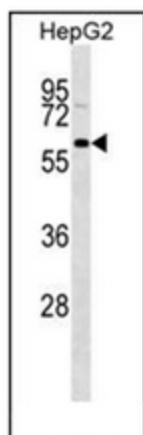


[View online »](#)

Note: **Molecular Weight:** 44511 Da

Protein Families: Druggable Genome

Product images:



Western blot analysis of GFRA3 Antibody (Center) in HepG2 cell line lysates (35ug/lane). This demonstrates the GFRA3 antibody detected the GFRA3 protein (arrow).