

Product datasheet for **AP51819PU-N**

ALR (GFER) (Center) Rabbit Polyclonal Antibody

Product data:

Product Type:	Primary Antibodies
Applications:	WB
Recommended Dilution:	ELISA: 1/1000. Western Blot: 1/100-1/500.
Reactivity:	Human, Mouse
Host:	Rabbit
Isotype:	Ig
Clonality:	Polyclonal
Immunogen:	KLH conjugated synthetic peptide between 74-103 amino acids from the Central region of Human Hepatopoietin.
Specificity:	This antibody recognizes Human Hepatopoietin (Center).
Formulation:	PBS containing 0.09% (W/V) Sodium Azide as preservative State: Aff - Purified State: Liquid purified Ig fraction
Concentration:	lot specific
Purification:	Protein A column, followed by peptide affinity purification
Conjugation:	Unconjugated
Storage:	Store undiluted at 2-8°C for one month or (in aliquots) at -20°C for longer. Avoid repeated freezing and thawing.
Stability:	Shelf life: one year from despatch.
Gene Name:	growth factor, augments liver regeneration
Database Link:	Entrez Gene 11692 Mouse Entrez Gene 2671 Human P55789



[View online »](#)

Background:

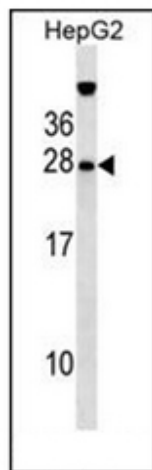
The hepatotrophic factor designated augments liver regeneration (ALR) is thought to be one of the factors responsible for the extraordinary regenerative capacity of mammalian liver. It has also been called hepatic regenerative stimulation substance (HSS). The gene resides on chromosome 16 in the interval containing the locus for polycystic kidney disease (PKD1). The putative gene product is 42% similar to the scERV1 protein of yeast. The yeast scERV1 gene had been found to be essential for oxidative phosphorylation, the maintenance of mitochondrial genomes, and the cell division cycle. The human gene is both the structural and functional homolog of the yeast scERV1 gene.

Synonyms:

GFER, ALR, HERV1, HPO

Note:

Molecular Weight: 23449 Da

Product images:

Western blot analysis of Hepatopoietin Antibody (Center) in HepG2 cell line lysates (35ug/lane). This demonstrates the GFER antibody detected the GFER protein (arrow).