

## Product datasheet for **AP51818PU-N**

### GEN1 (N-term) Rabbit Polyclonal Antibody

#### Product data:

Product Type:	Primary Antibodies
Applications:	WB
Recommended Dilution:	<b>Peptide ELISA:</b> 1/1000. <b>Western Blot:</b> 1/2000.
Reactivity:	Human, Mouse
Host:	Rabbit
Isotype:	Ig
Clonality:	Polyclonal
Immunogen:	KLH conjugated synthetic peptide between 60–89 amino acids from the N-terminal region of human GEN1
Specificity:	This antibody recognizes Human and Mouse GEN1 (N-term).
Formulation:	PBS containing 0.09% (W/V) Sodium Azide as preservative State: Aff - Purified State: Liquid purified Ig fraction
Concentration:	lot specific
Purification:	Protein A column, followed by peptide affinity purification
Conjugation:	Unconjugated
Storage:	Store undiluted at 2-8°C for one month or (in aliquots) at -20°C for longer. Avoid repeated freezing and thawing.
Stability:	Shelf life: one year from despatch.
Gene Name:	GEN1, Holliday junction 5' flap endonuclease
Database Link:	<a href="#">Entrez Gene 348654 Human Q17RS7</a>
Background:	Endonuclease which cleaves flap structures at the junction between single-stranded DNA and double-stranded DNA. Specific for 5'-overhanging flap structures in which the 5'-upstream of the flap is completely double-stranded. Prefers the blocked-flap structures similar to those occurring at replication forks, in which the 5' single-strand overhang of the flap is double-stranded (By similarity).

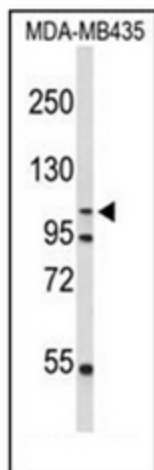


[View online »](#)

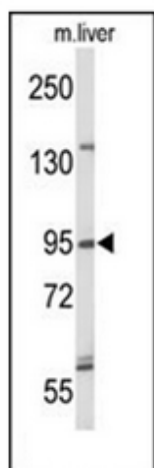
Synonyms: DKFZp781F0986; FLJ40869; Gen

Note: **Molecular Weight:** 102884 Da

### Product images:



Western blot analysis of GEN1 Antibody (N-term) in MDA-MB435 cell line lysates (35ug/lane). GEN1 (arrow) was detected using the purified Pab;



Western blot analysis of GEN1 Antibody (N-term) in mouse liver tissue lysates (35ug/lane). GEN1 (arrow) was detected using the purified Pab.