

Product datasheet for **AP51814PU-N**

GDPD1 (N-term) Rabbit Polyclonal Antibody

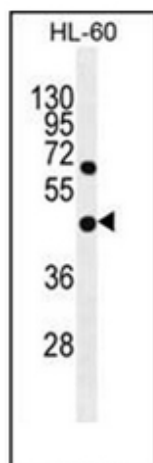
Product data:

Product Type:	Primary Antibodies
Applications:	IHC, WB
Recommended Dilution:	ELISA: 1/1000. Western Blot: 1/100-1/500. Immunohistochemistry on Paraffin Sections: 1/10-1/50.
Reactivity:	Human
Host:	Rabbit
Isotype:	Ig
Clonality:	Polyclonal
Immunogen:	KLH conjugated synthetic peptide between 25-54 amino acids from the N-terminal region of Human GDPD1
Specificity:	This antibody recognizes Human GDPD1 (N-term).
Formulation:	PBS containing 0.09% (W/V) Sodium Azide as preservative State: Aff - Purified State: Liquid purified Ig fraction
Concentration:	lot specific
Purification:	Protein A column, followed by peptide affinity purification
Conjugation:	Unconjugated
Storage:	Store undiluted at 2-8°C for one month or (in aliquots) at -20°C for longer. Avoid repeated freezing and thawing.
Stability:	Shelf life: one year from despatch.
Gene Name:	glycerophosphodiester phosphodiesterase domain containing 1
Database Link:	Entrez Gene 284161 Human Q8N9F7
Synonyms:	GDE4
Note:	Molecular Weight: 36167 Da
Protein Families:	Transmembrane

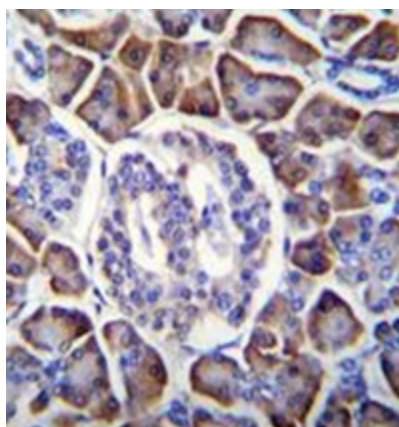


[View online »](#)

Product images:



Western blot analysis of GDPD1 Antibody (N-term) in HL-60 cell line lysates (35ug/lane). This demonstrates the GDPD1 antibody detected the GDPD1 protein (arrow).



Immunohistochemistry analysis in formalin fixed and paraffin embedded human pancreas tissue reacted with GDPD1 Antibody (N-term) followed by peroxidase conjugation of the secondary antibody and DAB staining.