

## Product datasheet for **AP51812PU-N**

### GDF6 (N-term) Rabbit Polyclonal Antibody

#### Product data:

Product Type:	Primary Antibodies
Applications:	FC, IHC, WB
Recommended Dilution:	<b>Western Blot:</b> 1/1000. <b>Flow Cytometry:</b> 1/10-1/50. <b>Immunohistochemistry on Paraffin Sections:</b> 1/50-1/100.
Reactivity:	Human, Mouse
Host:	Rabbit
Isotype:	Ig
Clonality:	Polyclonal
Immunogen:	KLH conjugated synthetic peptide between 31-59 amino acids from the N-terminal region of Human GDF6 / BMP13
Specificity:	This antibody recognizes Human and Mouse BMP13 / GDF6 (N-term).
Formulation:	PBS containing 0.09% (W/V) Sodium Azide as preservative State: Purified State: Liquid purified Ig fraction
Concentration:	lot specific
Purification:	Saturated Ammonium Sulfate (SAS) precipitation followed by dialysis against PBS
Conjugation:	Unconjugated
Storage:	Store undiluted at 2-8°C for one month or (in aliquots) at -20°C for longer. Avoid repeated freezing and thawing.
Stability:	Shelf life: one year from despatch.
Gene Name:	growth differentiation factor 6
Database Link:	<a href="#">Entrez Gene 242316 Mouse</a> <a href="#">Entrez Gene 392255 Human</a> <a href="#">Q6KF10</a>



[View online »](#)

**Background:** This gene encodes a member of the bone morphogenetic protein (BMP) family and the TGF-beta superfamily of secreted signaling molecules. It is required for normal formation of some bones and joints in the limbs, skull, and axial skeleton. Mutations in this gene result in colobomata, which are congenital abnormalities in ocular development, and in Klippel-Feil syndrome (KFS), which is a congenital disorder of spinal segmentation.

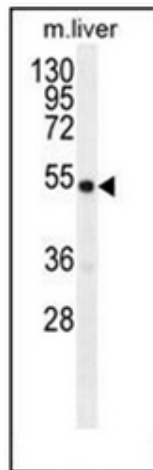
**Synonyms:** Bone Morphogenetic Protein 13, GDF-6, GDF16, GDF-16, CDMP2

**Note:** **Molecular Weight:** 50662 Da

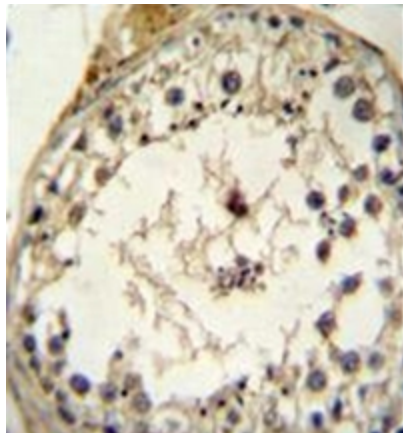
**Protein Families:** Druggable Genome, Secreted Protein

**Protein Pathways:** TGF-beta signaling pathway

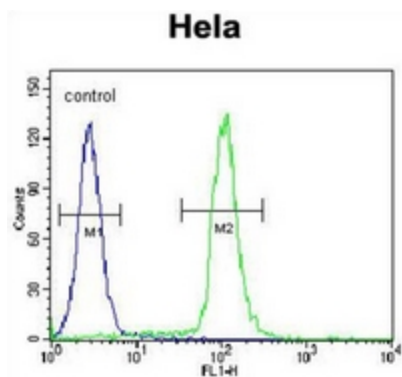
### Product images:



Western blot analysis of BMP13 / GDF6 Antibody (N-term) in mouse liver tissue lysates (35ug/lane). This demonstrates the GDF6 antibody detected the GDF6 protein (arrow).



Immunohistochemistry analysis in formalin fixed and paraffin embedded human testis tissue reacted with BMP13 / GDF6 Antibody (N-term) followed by peroxidase conjugation of the secondary antibody and DAB staining.



Flow cytometric analysis of HeLa cells using BMP13 / GDF6 Antibody (N-term) (right histogram) compared to a negative control cell (left histogram). FITC-conjugated goat-anti-rabbit secondary antibodies were used for the analysis.