

## Product datasheet for **AP51811PU-N**

### **GDF 5 (GDF5) (C-term) Rabbit Polyclonal Antibody**

#### **Product data:**

Product Type:	Primary Antibodies
Applications:	IHC, WB
Recommended Dilution:	<b>ELISA:</b> 1/1000. <b>Western Blot:</b> 1/100-1/500. <b>Immunohistochemistry on Paraffin Sections:</b> 1/10-1/50.
Reactivity:	Human
Host:	Rabbit
Isotype:	Ig
Clonality:	Polyclonal
Immunogen:	conjugated synthetic peptide between 350-379 amino acids from the C-terminal region of human BMP14 / GDF5
Specificity:	This antibody recognizes Human BMP14 / GDF5 (C-term).
Formulation:	PBS containing 0.09% (W/V) Sodium Azide as preservative State: Aff - Purified State: Liquid purified Ig fraction
Concentration:	lot specific
Purification:	Protein A column, followed by peptide affinity purification
Conjugation:	Unconjugated
Storage:	Store undiluted at 2-8°C for one month or (in aliquots) at -20°C for longer. Avoid repeated freezing and thawing.
Stability:	Shelf life: one year from despatch.
Gene Name:	growth differentiation factor 5
Database Link:	<a href="#">Entrez Gene 8200 Human P43026</a>



[View online »](#)

**Background:** The protein encoded by this gene is a member of the bone morphogenetic protein (BMP) family and the TGF-beta superfamily. This group of proteins is characterized by a polybasic proteolytic processing site which is cleaved to produce a mature protein containing seven conserved cysteine residues. The members of this family are regulators of cell growth and differentiation in both embryonic and adult tissues. Mutations in this gene are associated with acromesomelic dysplasia, Hunter-Thompson type; brachydactyly, type C; and chondrodysplasia, Grebe type. These associations confirm that the gene product plays a role in skeletal development.

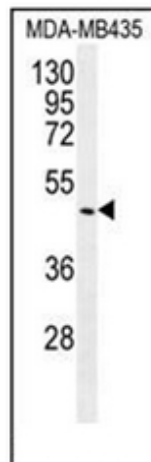
**Synonyms:** Bone Morphogenetic Protein 14, GDF-5, CDMP1, Radotermin

**Note:** **Molecular Weight:** 55411 Da

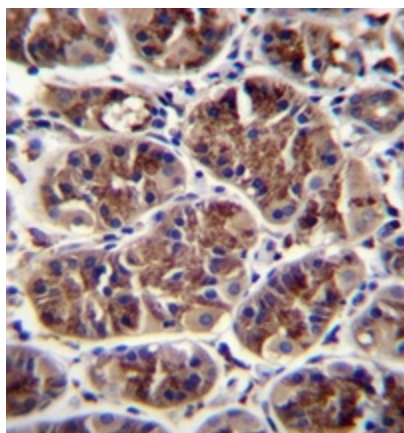
**Protein Families:** Adult stem cells, Cancer stem cells, Druggable Genome, Embryonic stem cells, ES Cell Differentiation/IPS, Secreted Protein, Stem cell relevant signaling - TGFb/BMP signaling pathway

**Protein Pathways:** Cytokine-cytokine receptor interaction, TGF-beta signaling pathway

**Product images:**



Western blot analysis of BMP14 / GDF5 Antibody (C-term) in MDA-MB435 cell line lysates (35ug/lane). This demonstrates the GDF5 antibody detected the GDF5 protein (arrow).



Immunohistochemistry analysis in formalin fixed and paraffin embedded human stomach tissue reacted with BMP14 / GDF5 Antibody (C-term) followed by peroxidase conjugation of the secondary antibody and DAB staining.