

Product datasheet for **AP51804PU-N**

GCNT3 (C-term) Rabbit Polyclonal Antibody

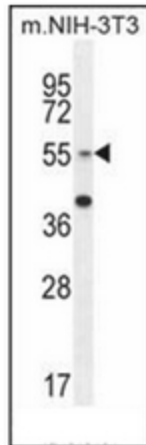
Product data:

Product Type:	Primary Antibodies
Applications:	FC, IHC, WB
Recommended Dilution:	ELISA: 1/1000. Western Blot: 1/1000. Flow Cytometry: 1/10-1/50. Immunohistochemistry on Paraffin Sections: 1/50-1/100.
Reactivity:	Human, Mouse
Host:	Rabbit
Isotype:	Ig
Clonality:	Polyclonal
Immunogen:	KLH conjugated synthetic peptide between 390-418 amino acids from the C-terminal region of Human GCNT3
Specificity:	This antibody recognizes Human and Mouse GCNT3 (C-term).
Formulation:	PBS containing 0.09% (W/V) Sodium Azide as preservative State: Aff - Purified State: Liquid purified Ig fraction
Concentration:	lot specific
Purification:	Protein A column, followed by peptide affinity purification
Conjugation:	Unconjugated
Storage:	Store undiluted at 2-8°C for one month or (in aliquots) at -20°C for longer. Avoid repeated freezing and thawing.
Stability:	Shelf life: one year from despatch.
Gene Name:	glucosaminyl (N-acetyl) transferase 3, mucin type
Database Link:	Entrez Gene 72077 Mouse Entrez Gene 9245 Human O95395
Background:	This gene encodes a member of the N-acetylglucosaminyltransferase family. The encoded protein is a beta-6-N-acetylglucosamine-transferase that catalyzes the formation of core 2 and core 4 O-glycans on mucin-type glycoproteins.

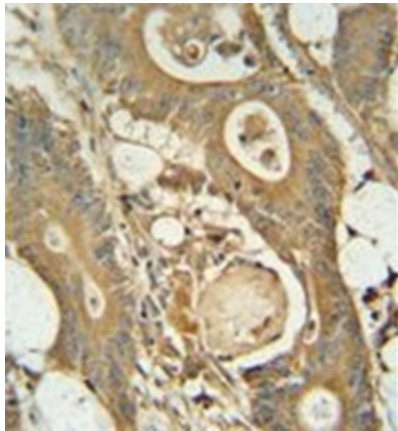


[View online »](#)

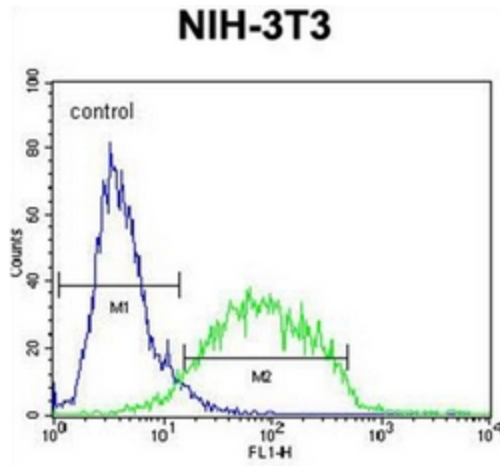
Synonyms:	C2GnT-mucin type, C2/4GnT
Note:	Molecular Weight: 50864 Da
Protein Families:	Transmembrane
Protein Pathways:	Metabolic pathways, O-Glycan biosynthesis

Product images:

Western blot analysis of GCNT3 Antibody (C-term) in mouse NIH-3T3 cell line lysates (35ug/lane). This demonstrates the GCNT3 antibody detected the GCNT3 protein (arrow).



Immunohistochemistry analysis in formalin fixed and paraffin embedded human colon carcinoma reacted with GCNT3 Antibody (C-term) followed by peroxidase conjugation of the secondary antibody and DAB staining.



Flow cytometric analysis of NIH-3T3 cells using GCNT3 Antibody (C-term) (right histogram) compared to a negative control cell (left histogram). FITC-conjugated goat-anti-rabbit secondary antibodies were used for the analysis.