

## Product datasheet for **AP51797PU-N**

### **GCC2 (C-term) Rabbit Polyclonal Antibody**

#### **Product data:**

Product Type:	Primary Antibodies
Applications:	IHC, WB
Recommended Dilution:	<b>ELISA:</b> 1/1000. <b>Western Blot:</b> 1/100-1/500. <b>Flow Cytometry:</b> 1/10-1/50. <b>Immunohistochemistry on Paraffin Sections:</b> 1/50-1/100.
Reactivity:	Human, Mouse
Host:	Rabbit
Isotype:	Ig
Clonality:	Polyclonal
Immunogen:	KLH conjugated synthetic peptide between 1548-1617 amino acids from the C-terminal region of human GCC2
Specificity:	This antibody recognizes Human and Mouse GCC2 (C-term).
Formulation:	PBS containing 0.09% (W/V) Sodium Azide as preservative State: Aff - Purified State: Liquid purified Ig fraction
Concentration:	lot specific
Purification:	Protein A column, followed by peptide affinity purification
Conjugation:	Unconjugated
Storage:	Store undiluted at 2-8°C for one month or (in aliquots) at -20°C for longer. Avoid repeated freezing and thawing.
Stability:	Shelf life: one year from despatch.
Gene Name:	GRIP and coiled-coil domain containing 2
Database Link:	<a href="#">Entrez Gene 9648 Human Q8IWJ2</a>



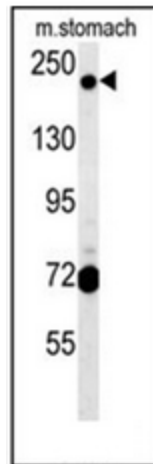
[View online »](#)

**Background:** The protein encoded by this gene is a peripheral membrane protein localized to the trans-Golgi network. It is sensitive to brefeldin A. This encoded protein contains a GRIP domain which is thought to be used in targeting. Alternative splicing results in multiple transcript variants

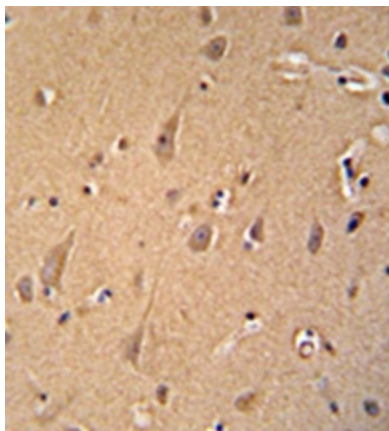
**Synonyms:** Golgi coiled-coil protein GCC185, KW-11, NY-REN-5, se1-1, KIAA0336, RANBP2L4

**Note:** **Molecular Weight:** 195910 Da

**Product images:**



Western blot analysis of GCC2 Antibody (C-term) in mouse stomach tissue lysates (15ug/lane). This demonstrates the GCC2 antibody detected GCC2 protein (arrow).



Immunohistochemistry analysis in formalin fixed and paraffin embedded human brain tissue reacted with, which was peroxidase conjugated to the secondary antibody and followed by DAB staining.