

Product datasheet for **AP51796PU-N**

GCC1 (C-term) Rabbit Polyclonal Antibody

Product data:

Product Type:	Primary Antibodies
Applications:	IHC, WB
Recommended Dilution:	ELISA: 1/1000. Western Blot: 1/100-1/500. Immunohistochemistry on Paraffin Sections: 1/10-1/50.
Reactivity:	Human
Host:	Rabbit
Isotype:	Ig
Clonality:	Polyclonal
Immunogen:	KLH conjugated synthetic peptide between 670-700 amino acids from the C-terminal region of human GCC1
Specificity:	This antibody recognizes Human GCC1 (C-term).
Formulation:	PBS containing 0.09% (W/V) Sodium Azide as preservative State: Aff - Purified State: Liquid purified Ig fraction
Concentration:	lot specific
Purification:	Protein A column, followed by peptide affinity purification
Conjugation:	Unconjugated
Storage:	Store undiluted at 2-8°C for one month or (in aliquots) at -20°C for longer. Avoid repeated freezing and thawing.
Stability:	Shelf life: one year from despatch.
Gene Name:	GRIP and coiled-coil domain containing 1
Database Link:	Entrez Gene 79571 Human Q96CN9
Background:	The protein encoded by this gene is a peripheral membrane protein. It is sensitive to brefeldin A. This encoded protein contains a GRIP domain which is thought to be used in targeting. It may play a role in the organization of trans-Golgi network subcompartment involved with membrane transport. [provided by RefSeq].

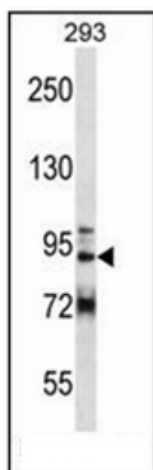


[View online »](#)

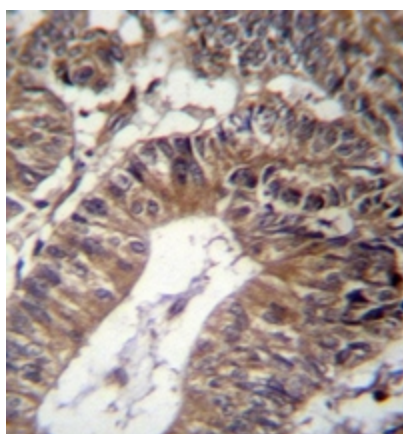
Synonyms: Golgi coiled-coil protein 1

Note: **Molecular Weight:** 87811 Da

Product images:



Western blot analysis of GCC1 Antibody (C-term) in 293 cell line lysates (35ug/lane). This demonstrates the GCC1 antibody detected the GCC1 protein (arrow).



Immunohistochemistry analysis in formalin fixed and paraffin embedded human colon carcinoma reacted with GCC1 Antibody (C-term) followed by peroxidase conjugation of the secondary antibody and DAB staining.