

Product datasheet for **AP51795PU-N**

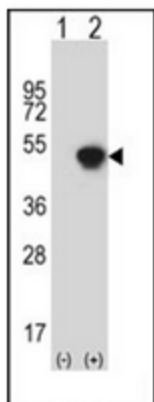
GCAT (N-term) Rabbit Polyclonal Antibody

Product data:

| | |
|-----------------------|--|
| Product Type: | Primary Antibodies |
| Applications: | WB |
| Recommended Dilution: | ELISA: 1/1000. Western Blot: 1/100-1/500. |
| Reactivity: | Human |
| Host: | Rabbit |
| Isotype: | Ig |
| Clonality: | Polyclonal |
| Immunogen: | KLH conjugated synthetic peptide between 100-128 amino acids from the N-terminal region of human AKB ligase / GCAT |
| Specificity: | This antibody recognizes Human AKB ligase / GCAT (N-term). |
| Formulation: | PBS containing 0.09% (W/V) Sodium Azide as preservative State: Purified State: Liquid purified Ig fraction |
| Concentration: | lot specific |
| Purification: | Saturated Ammonium Sulfate (SAS) precipitation followed by dialysis against PBS |
| Conjugation: | Unconjugated |
| Storage: | Store undiluted at 2-8°C for one month or (in aliquots) at -20°C for longer. Avoid repeated freezing and thawing. |
| Stability: | Shelf life: one year from despatch. |
| Gene Name: | glycine C-acetyltransferase |
| Database Link: | Entrez Gene 23464 Human O75600 |
| Synonyms: | Glycine acetyltransferase, Aminoacetone synthetase, KBL |
| Note: | Molecular Weight: 45285 Da |
| Protein Pathways: | Glycine, serine and threonine metabolism |



[View online »](#)

Product images:

Western blot analysis of GCAT (arrow) using AKB ligase / GCAT Antibody (N-term). 293 cell lysates (2 ug/lane) either nontransfected (Lane 1) or transiently transfected (Lane 2) with the GCAT gene.