

Product datasheet for **AP51790PU-N**

GBE1 (Center) Rabbit Polyclonal Antibody

Product data:

Product Type:	Primary Antibodies
Applications:	IF, WB
Recommended Dilution:	ELISA: 1/1000. Western Blot: 1/100-1/500. Immunofluorescence: 1/10-1/50.
Reactivity:	Human, Mouse
Host:	Rabbit
Isotype:	Ig
Clonality:	Polyclonal
Immunogen:	KLH conjugated synthetic peptide between 534-564 amino acids from the Central region of human GBE1
Specificity:	This antibody recognizes Human and Mouse GBE1 (Center).
Formulation:	PBS containing 0.09% (W/V) Sodium Azide as preservative State: Aff - Purified State: Liquid purified Ig fraction
Concentration:	lot specific
Purification:	Protein A column, followed by peptide affinity purification
Conjugation:	Unconjugated
Storage:	Store undiluted at 2-8°C for one month or (in aliquots) at -20°C for longer. Avoid repeated freezing and thawing.
Stability:	Shelf life: one year from despatch.
Gene Name:	glucan (1,4-alpha-), branching enzyme 1
Database Link:	Entrez Gene 2632 Human Q04446



[View online »](#)

Background: GBE1 is a glycogen branching enzyme that catalyzes the transfer of alpha-1,4-linked glucosyl units from the outer end of a glycogen chain to an alpha-1,6 position on the same or a neighboring glycogen chain. Branching of the chains is essential to increase the solubility of the glycogen molecule and, consequently, in reducing the osmotic pressure within cells. Highest level of this enzyme are found in liver and muscle. Mutations in this gene are associated with glycogen storage disease IV (also known as Andersen's disease).

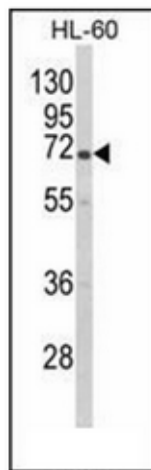
Synonyms: Glycogen-branching enzyme, Brancher enzyme

Note: **Molecular Weight:** 80460 Da

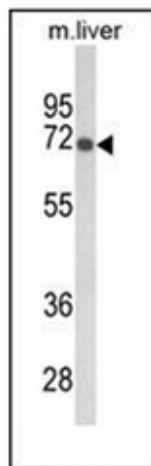
Protein Families: Druggable Genome

Protein Pathways: Metabolic pathways, Starch and sucrose metabolism

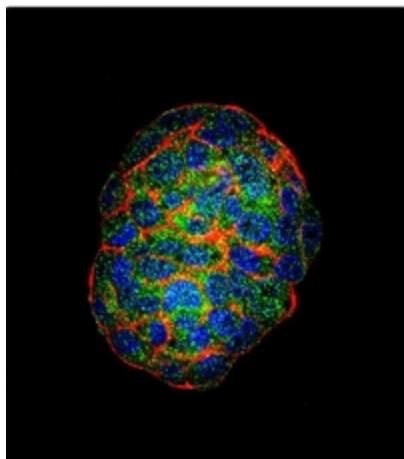
Product images:



Western blot analysis of GBE1 Antibody (Center) in HL-60 cell line lysates (35ug/lane).



Western blot analysis of GBE1 Antibody (Center) in mouse liver tissue lysates (35ug/lane).



Confocal immunofluorescent analysis of GBE1 Antibody (Center) with HepG2 cell followed by Alexa Fluor[®] 488-conjugated goat anti-rabbit IgG (green). Actin filaments have been labeled with Alexa Fluor 555 phalloidin (red). DAPI was used to stain the cell nuclear (blue).