

## Product datasheet for **AP51787PU-N**

### **GABARAPL2 (N-term) Rabbit Polyclonal Antibody**

#### **Product data:**

Product Type:	Primary Antibodies
Applications:	WB
Recommended Dilution:	<b>ELISA:</b> 1/1000. <b>Western Blot:</b> 1/100-1/500.
Reactivity:	Human, Mouse
Host:	Rabbit
Isotype:	Ig
Clonality:	Polyclonal
Immunogen:	KLH conjugated synthetic peptide between 1-30 amino acids from the N-terminal region of human GABARAPL2
Specificity:	This antibody recognizes Human and Mouse GABARAPL2 (N-term).
Formulation:	PBS containing 0.09% (W/V) Sodium Azide as preservative State: Aff - Purified State: Liquid purified Ig fraction
Concentration:	lot specific
Purification:	Protein A column, followed by peptide affinity purification
Conjugation:	Unconjugated
Storage:	Store undiluted at 2-8°C for one month or (in aliquots) at -20°C for longer. Avoid repeated freezing and thawing.
Stability:	Shelf life: one year from despatch.
Gene Name:	GABA type A receptor associated protein like 2
Database Link:	<a href="#">Entrez Gene 93739 Mouse</a> <a href="#">Entrez Gene 11345 Human</a> <a href="#">P60520</a>
Background:	Involved in intra-Golgi traffic. Modulates intra-Golgi transport through coupling between NSF activity and SNAREs activation. It first stimulates the ATPase activity of NSF which in turn stimulates the association with GOSR1 (By similarity).
Synonyms:	FLC3A, GEF2, GABA A receptor-associated protein-like 2, GATE16

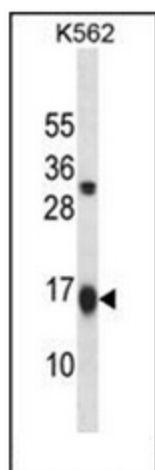


[View online »](#)

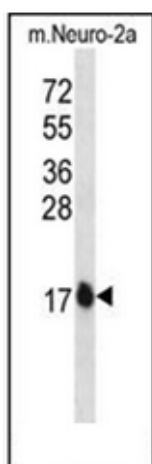
Note: **Molecular Weight:** 13667 Da

Protein Pathways: Regulation of autophagy

### Product images:



Western blot analysis of GABARAPL2 Antibody (N-term) in K562 cell line lysates (35ug/lane).



Western blot analysis of GABARAPL2 Antibody (N-term) in mouse Neuro-2a cell line lysates (35ug/lane).