

Product datasheet for **AP51785PU-N**

GATA3 (Center) Rabbit Polyclonal Antibody

Product data:

Product Type:	Primary Antibodies
Applications:	WB
Recommended Dilution:	ELISA: 1/1000. Western Blot: 1/100-1/500.
Reactivity:	Human, Mouse
Host:	Rabbit
Isotype:	Ig
Clonality:	Polyclonal
Immunogen:	KLH conjugated synthetic peptide between 234-263 amino acids from the Central region of human GATA3
Specificity:	This antibody recognizes Human and Mouse GATA3 (Center).
Formulation:	PBS containing 0.09% (W/V) Sodium Azide as preservative State: Aff - Purified State: Liquid purified Ig fraction
Concentration:	lot specific
Purification:	Protein A column, followed by peptide affinity purification
Conjugation:	Unconjugated
Storage:	Store undiluted at 2-8°C for one month or (in aliquots) at -20°C for longer. Avoid repeated freezing and thawing.
Stability:	Shelf life: one year from despatch.
Gene Name:	GATA binding protein 3
Database Link:	Entrez Gene 14462 Mouse Entrez Gene 2625 Human P23771
Background:	This gene encodes a protein which belongs to the GATA family of transcription factors. The protein contains two GATA-type zinc fingers and is an important regulator of T-cell development and plays an important role in endothelial cell biology. Defects in this gene are the cause of hypoparathyroidism with sensorineural deafness and renal dysplasia.
Synonyms:	GATA-3, GATA-binding factor 3

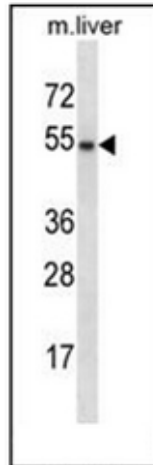


[View online »](#)

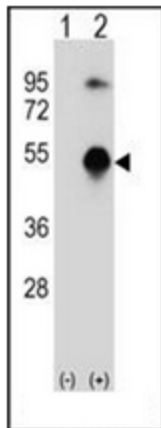
Note: **Molecular Weight:** 47916 Da

Protein Families: Adult stem cells, ES Cell Differentiation/IPS, Stem cell relevant signaling - JAK/STAT signaling pathway, Transcription Factors

Product images:



Western blot analysis of GATA3 Antibody (Center) in mouse liver tissue lysates (35ug/lane). This demonstrates the GATA3 antibody detected the GATA3 protein (arrow).



Western blot analysis of GATA3 (arrow) using GATA3 Antibody (Center). 293 cell lysates (2 ug/lane) either nontransfected (Lane 1) or transiently transfected (Lane 2) with the GATA3 gene.