

## Product datasheet for **AP51782PU-N**

### **GAS2L1 (C-term) Rabbit Polyclonal Antibody**

#### **Product data:**

Product Type:	Primary Antibodies
Applications:	FC, WB
Recommended Dilution:	<b>ELISA:</b> 1/1000. <b>Western Blot:</b> 1/100-1/500. Flow Cytometry: 1/10-1/50.
Reactivity:	Human
Host:	Rabbit
Isotype:	Ig
Clonality:	Polyclonal
Immunogen:	KLH conjugated synthetic peptide between 625-654 amino acids from the C-terminal region of human GAS2L1
Specificity:	This antibody recognizes Human GAS2L1 (C-term).
Formulation:	PBS containing 0.09% (W/V) Sodium Azide as preservative State: Aff - Purified State: Liquid purified Ig fraction
Concentration:	lot specific
Purification:	Protein A column, followed by peptide affinity purification
Conjugation:	Unconjugated
Storage:	Store undiluted at 2-8°C for one month or (in aliquots) at -20°C for longer. Avoid repeated freezing and thawing.
Stability:	Shelf life: one year from despatch.
Gene Name:	growth arrest specific 2 like 1
Database Link:	<a href="#">Entrez Gene 10634 Human Q99501</a>



[View online »](#)

**Background:**

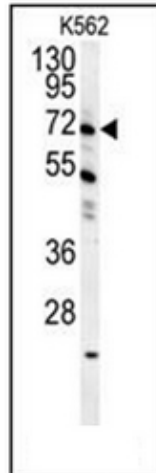
The protein encoded by this gene, a member of the GAS2 family, is similar in sequence to the mouse protein Gas2, an actin-associated protein expressed at high levels in growth-arrested cells. Expression of the mouse Gas2 gene is negatively regulated by serum and growth factors. Three transcript variants encoding two different isoforms have been found for this gene.

**Synonyms:**

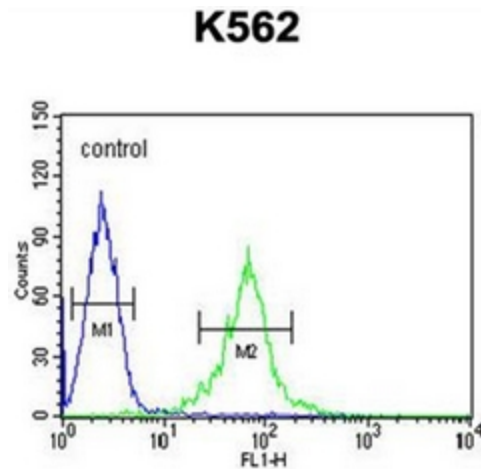
GAS2L1, GAR22

**Note:**

**Molecular Weight:** 72717 Da

**Product images:**


Western blot analysis of GAS2L1 Antibody (C-term) in K562 cell line lysates (35ug/lane). This demonstrates the GAS2L1 antibody detected the GAS2L1 protein (arrow).



Flow cytometric analysis of K562 cells using GAS2L1 Antibody (C-term) (right histogram) compared to a negative control cell (left histogram). FITC-conjugated goat-anti-rabbit secondary antibodies were used for the analysis.