

Product datasheet for **AP51776PU-N**

GALR1 (Center) Rabbit Polyclonal Antibody

Product data:

Product Type:	Primary Antibodies
Applications:	FC, WB
Recommended Dilution:	ELISA: 1/1000. Western Blot: 1/100-1/500. Flow Cytometry: 1/10-1/50.
Reactivity:	Human
Host:	Rabbit
Isotype:	Ig
Clonality:	Polyclonal
Immunogen:	KLH conjugated synthetic peptide between 180~209 amino acids from the Center region of Human GALR1
Specificity:	This antibody recognizes Human GALR1 (Center).
Formulation:	PBS containing 0.09% (W/V) Sodium Azide as preservative State: Aff - Purified State: Liquid purified Ig fraction
Concentration:	lot specific
Purification:	Protein A column, followed by peptide affinity purification
Conjugation:	Unconjugated
Storage:	Store undiluted at 2-8°C for one month or (in aliquots) at -20°C for longer. Avoid repeated freezing and thawing.
Stability:	Shelf life: one year from despatch.
Gene Name:	galanin receptor 1
Database Link:	Entrez Gene 2587 Human P47211



[View online »](#)

Background:

GALR1 elicits a range of biological effects by interaction with specific G-protein-coupled receptors. Galanin receptors are seven-transmembrane proteins shown to activate a variety of intracellular second-messenger pathways. GALR1 inhibits adenylyl cyclase via a G protein of the Gi/Go family. GALR1 is widely expressed in the brain and spinal cord, as well as in peripheral sites such as the small intestine and heart.

Synonyms:

GALR-1, GALNR1, GALNR, Galanin receptor type 1, GAL1-R

Note:

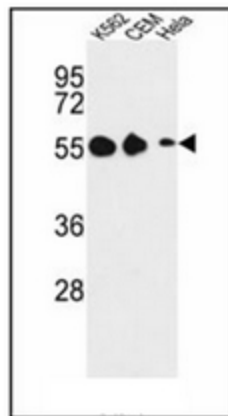
Molecular Weight: 38980 Da

Protein Families:

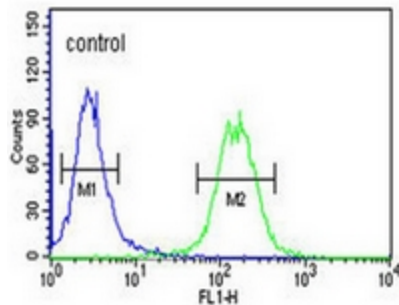
Druggable Genome, Transmembrane

Protein Pathways:

Neuroactive ligand-receptor interaction

Product images:


Western blot analysis of GALR1 Antibody (Center) in K562, CEM, HeLa cell line lysates (35ug/lane). GALR1 (arrow) was detected using the purified Pab.

K562


Flow cytometry analysis of K562 cells using GALR1 Antibody (Center) (right histogram) compared to a negative control cell (left histogram). FITC-conjugated goat-anti-rabbit secondary antibodies were used for the analysis.