

## Product datasheet for **AP51760PU-N**

### Galanin (GAL) (Center) Rabbit Polyclonal Antibody

#### Product data:

Product Type:	Primary Antibodies
Applications:	IF, IHC, WB
Recommended Dilution:	<b>ELISA:</b> 1/1000. <b>Western Blot:</b> 1/100-1/500. <b>Immunofluorescence:</b> 1/10-1/50. <b>Immunohistochemistry on Paraffin Sections:</b> 1/50-1/100.
Reactivity:	Human
Host:	Rabbit
Isotype:	Ig
Clonality:	Polyclonal
Immunogen:	KLH conjugated synthetic peptide between 55-86 amino acids from the Central region of human GAL
Specificity:	This antibody recognizes Human Galanin (Center).
Formulation:	PBS containing 0.09% (W/V) Sodium Azide as preservative State: Aff - Purified State: Liquid purified Ig fraction
Concentration:	lot specific
Purification:	Protein A column, followed by peptide affinity purification
Conjugation:	Unconjugated
Storage:	Store undiluted at 2-8°C for one month or (in aliquots) at -20°C for longer. Avoid repeated freezing and thawing.
Stability:	Shelf life: one year from despatch.
Gene Name:	galanin and GMAP prepropeptide
Database Link:	<a href="#">Entrez Gene 51083 Human P22466</a>
Background:	Galanin is small neuropeptide that functions as a cellular messenger within the central and peripheral nervous systems, modulating diverse physiologic functions (Mechenthaler, 2008 [PubMed 18500643]).



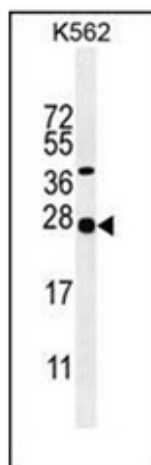
[View online »](#)

**Synonyms:** GAL, GAL1, GALN, GLNN, Galanin

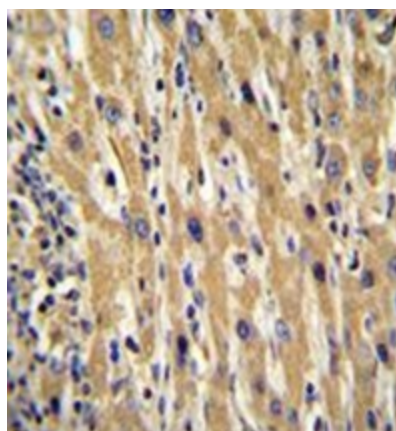
**Note:** **Molecular Weight:** 13302 Da

**Protein Families:** Secreted Protein, Transmembrane

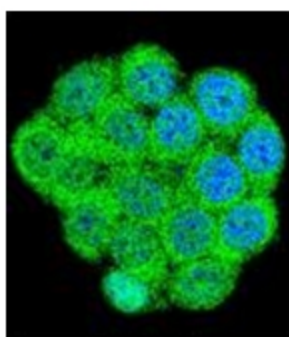
**Product images:**



Western blot analysis of Galanin Antibody (Center) in K562 cell line lysates (35ug/lane).



Immunohistochemistry analysis in formalin fixed and paraffin embedded human hepatocarcinoma reacted with Galanin Antibody (Center) followed by peroxidase conjugation of the secondary antibody and DAB staining.



Confocal immunofluorescent analysis of Galanin Antibody (Center) with 293 cell followed by Alexa Fluor 488-conjugated goat anti-rabbit IgG (green). DAPI was used to stain the cell nuclear (blue).