

Product datasheet for **AP51758PU-N**

GAGE13 (N-term) Rabbit Polyclonal Antibody

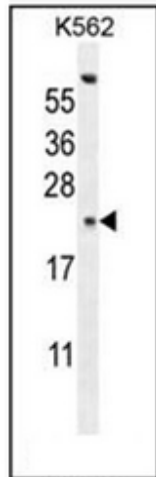
Product data:

| | |
|-----------------------|--|
| Product Type: | Primary Antibodies |
| Applications: | FC, IHC, WB |
| Recommended Dilution: | ELISA: 1/1000. Western Blot: 1/100-1/500. Flow Cytometry: 1/10-1/50. Immunohistochemistry on Paraffin Sections: 1/50-1/100. |
| Reactivity: | Human |
| Host: | Rabbit |
| Isotype: | Ig |
| Clonality: | Polyclonal |
| Immunogen: | KLH conjugated synthetic peptide between 1-30 amino acids from the N-terminal region of human GAGE13 |
| Specificity: | This antibody recognizes Human GAGE13 (N-term). |
| Formulation: | PBS containing 0.09% (W/V) Sodium Azide as preservative State: Aff - Purified State: Liquid purified Ig fraction |
| Concentration: | lot specific |
| Purification: | Protein A column, followed by peptide affinity purification |
| Conjugation: | Unconjugated |
| Storage: | Store undiluted at 2-8°C for one month or (in aliquots) at -20°C for longer. Avoid repeated freezing and thawing. |
| Stability: | Shelf life: one year from despatch. |
| Gene Name: | G antigen 13 |
| Database Link: | Entrez Gene 645051 Human Q4V321 |
| Synonyms: | G antigen 13,GAGE12A |
| Note: | Molecular Weight: 12873 Da |

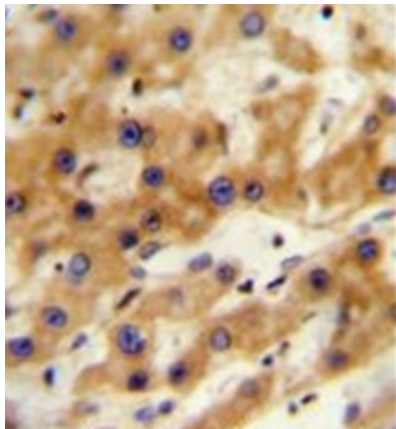


[View online »](#)

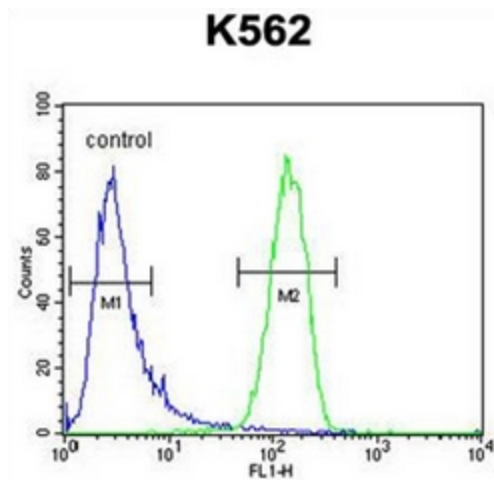
Product images:



Western blot analysis of GAGE13 Antibody (N-term) Cat.-No AP51758PU-N in K562 cell line lysates (35ug/lane). This demonstrates the GAGE13 antibody detected the GAGE13 protein (arrow).



Immunohistochemistry analysis in formalin fixed and paraffin embedded human hepatocarcinoma reacted with GAGE13 Antibody (N-term) Cat.-NoAP51758PU-N followed by peroxidase conjugation of the secondary antibody and DAB staining.



Flow cytometric analysis of K562 cells using GAGE13 Antibody (N-term) Cat.-No AP51758PU-N (right histogram) compared to a negative control cell (left histogram). FITC-conjugated goat-anti-rabbit secondary antibodies were used for the analysis.