

Product datasheet for **AP51757PU-N**

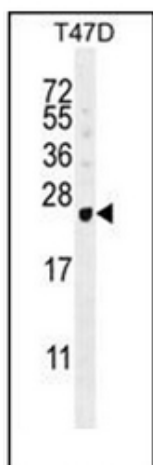
GAGE12D (N-term) Rabbit Polyclonal Antibody

Product data:

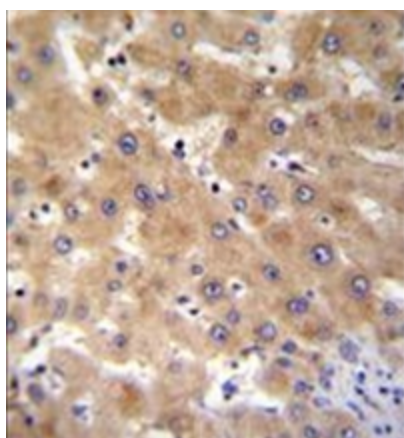
Product Type:	Primary Antibodies
Applications:	IHC, WB
Recommended Dilution:	ELISA: 1/1000. Western Blot: 1/100-1/500. Immunohistochemistry on Paraffin Sections: 1/50-1/100.
Reactivity:	Human
Host:	Rabbit
Isotype:	Ig
Clonality:	Polyclonal
Immunogen:	KLH conjugated synthetic peptide between 28-58 amino acids from the N-terminal region of Human GAGE12B
Specificity:	This antibody recognizes Human GAGE12B (N-term).
Formulation:	PBS containing 0.09% (W/V) Sodium Azide as preservative State: Aff - Purified State: Liquid purified Ig fraction
Concentration:	lot specific
Purification:	Protein A column, followed by peptide affinity purification
Conjugation:	Unconjugated
Storage:	Store undiluted at 2-8°C for one month or (in aliquots) at -20°C for longer. Avoid repeated freezing and thawing.
Stability:	Shelf life: one year from despatch.
Gene Name:	G antigen 12D
Database Link:	Entrez Gene 729422 Human Entrez Gene 100132399 Human A1L429
Synonyms:	G antigen 12B/C/D/E
Note:	Molecular Weight: 12925 Da



[View online »](#)

Product images:

Western blot analysis of GAGE12B Antibody (N-term) in T47D cell line lysates (35ug/lane). This demonstrates the GAGE12B antibody detected the GAGE12B protein (arrow).



Immunohistochemistry analysis in formalin fixed and paraffin embedded human liver tissue reacted with GAGE12B Antibody (N-term) followed by peroxidase conjugation of the secondary antibody and DAB staining.