

## Product datasheet for **AP51756PU-N**

### **GADD45G (N-term) Rabbit Polyclonal Antibody**

#### **Product data:**

Product Type:	Primary Antibodies
Applications:	WB
Recommended Dilution:	<b>ELISA:</b> 1/1000. <b>Western Blot:</b> 1/100-1/500.
Reactivity:	Human
Host:	Rabbit
Isotype:	Ig
Clonality:	Polyclonal
Immunogen:	KLH conjugated synthetic peptide between 1-30 amino acids from the N-terminal region of human GADD45G
Specificity:	This antibody recognizes Human GADD45G (N-term).
Formulation:	PBS containing 0.09% (W/V) Sodium Azide as preservative State: Aff - Purified State: Liquid purified Ig fraction
Concentration:	lot specific
Purification:	Protein A column, followed by peptide affinity purification
Conjugation:	Unconjugated
Storage:	Store undiluted at 2-8°C for one month or (in aliquots) at -20°C for longer. Avoid repeated freezing and thawing.
Stability:	Shelf life: one year from despatch.
Gene Name:	growth arrest and DNA damage inducible gamma
Database Link:	<a href="#">Entrez Gene 10912 Human O95257</a>
Background:	This gene is a member of a group of genes whose transcript levels are increased following stressful growth arrest conditions and treatment with DNA-damaging agents. The protein encoded by this gene responds to environmental stresses by mediating activation of the p38/JNK pathway via MTK1/MEKK4 kinase. The GADD45G is highly expressed in placenta.
Synonyms:	CR6, DDIT2

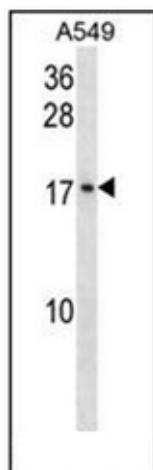


[View online »](#)

Note: **Molecular Weight:** 17121 Da

Protein Pathways: Cell cycle, MAPK signaling pathway, p53 signaling pathway

**Product images:**



Western blot analysis of GADD45G Antibody (N-term) in A549 cell line lysates (35ug/lane). This demonstrates the GADD45G antibody detected the GADD45G protein (arrow).