

## Product datasheet for **AP51754PU-N**

### **GAB4 (N-term) Rabbit Polyclonal Antibody**

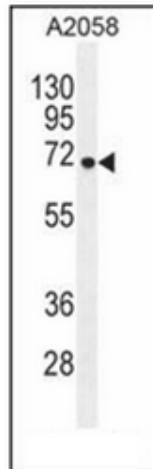
#### **Product data:**

Product Type:	Primary Antibodies
Applications:	FC, WB
Recommended Dilution:	<b>ELISA:</b> 1/1000. <b>Western Blot:</b> 1/100-1/500. <b>Flow Cytometry:</b> 1/10-1/50.
Reactivity:	Human
Host:	Rabbit
Isotype:	Ig
Clonality:	Polyclonal
Immunogen:	KLH conjugated synthetic peptide between 71-100 amino acids from the N-terminal region of human GAB4
Specificity:	This antibody recognizes Human GAB4 (N-term).
Formulation:	PBS containing 0.09% (W/V) Sodium Azide as preservative State: Aff - Purified State: Liquid purified Ig fraction
Concentration:	lot specific
Purification:	Protein A column, followed by peptide affinity purification
Conjugation:	Unconjugated
Storage:	Store undiluted at 2-8°C for one month or (in aliquots) at -20°C for longer. Avoid repeated freezing and thawing.
Stability:	Shelf life: one year from despatch.
Gene Name:	GRB2 associated binding protein family member 4
Database Link:	<a href="#">Entrez Gene 128954 Human</a> <a href="#">Q2WGN9</a>
Synonyms:	GAB2-like
Note:	<b>Molecular Weight:</b> 62367 Da

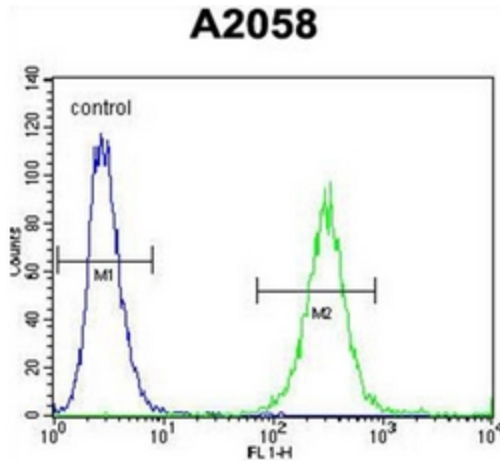


[View online »](#)

Product images:



Western blot analysis of GAB4 Antibody (N-term) in A2058 cell line lysates (35ug/lane). This demonstrates the GAB4 antibody detected the GAB4 protein (arrow)



Flow cytometric analysis of A2058 cells using GAB4 Antibody (N-term) (right histogram) compared to a negative control cell (left histogram). FITC-conjugated goat-anti-rabbit secondary antibodies were used for the analysis.