

## Product datasheet for **AP51753PU-N**

### **GAB3 (N-term) Rabbit Polyclonal Antibody**

#### **Product data:**

Product Type:	Primary Antibodies
Applications:	WB
Recommended Dilution:	<b>ELISA:</b> 1/1000. <b>Western Blot:</b> 1/100-1/500.
Reactivity:	Human
Host:	Rabbit
Isotype:	Ig
Clonality:	Polyclonal
Immunogen:	KLH conjugated synthetic peptide between 29-58 amino acids from the N-terminal region of Human GAB3
Specificity:	This antibody recognizes Human GAB3 (N-term).
Formulation:	PBS containing 0.09% (W/V) Sodium Azide as preservative State: Aff - Purified State: Liquid purified Ig fraction
Concentration:	lot specific
Purification:	Protein A column, followed by peptide affinity purification
Conjugation:	Unconjugated
Storage:	Store undiluted at 2-8°C for one month or (in aliquots) at -20°C for longer. Avoid repeated freezing and thawing.
Stability:	Shelf life: one year from despatch.
Gene Name:	GRB2 associated binding protein 3
Database Link:	<a href="#">Entrez Gene 139716 Human Q8WWW8</a>



[View online »](#)

**Background:**

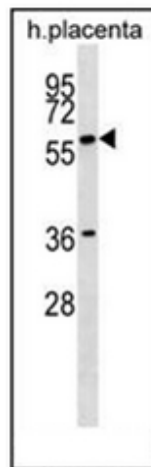
GAB3 is a member of the GRB2-associated binding protein gene family. These proteins are scaffolding/docking proteins that are involved in several growth factor and cytokine signaling pathways, and they contain a pleckstrin homology domain, and bind SHP2 tyrosine phosphatase and GRB2 adapter protein. The protein encoded by this gene facilitates macrophage differentiation. Two transcript variants encoding different isoforms have been found for this gene.

**Synonyms:**

GRB2-associated-binding protein 3

**Note:**

**Molecular Weight:** 65589 Da

**Product images:**

Western blot analysis of GAB3 Antibody (N-term) in human placenta tissue lysates (35ug/lane). This demonstrates the GAB3 antibody detected the GAB3 protein (arrow).