

Product datasheet for **AP51748PU-N**

Frizzled 4 (FZD4) (C-term) Rabbit Polyclonal Antibody

Product data:

Product Type:	Primary Antibodies
Applications:	WB
Recommended Dilution:	ELISA: 1/1000. Western Blot: 1/100-1/500.
Reactivity:	Human
Host:	Rabbit
Isotype:	Ig
Clonality:	Polyclonal
Immunogen:	KLH conjugated synthetic peptide between 501~531 amino acids from the C-terminal region of Human CD344 / FZD4 / Frizzled-4
Specificity:	This antibody recognizes Human and Mouse CD344 / FZD4 / Frizzled-4 (C-term).
Formulation:	PBS containing 0.09% (W/V) Sodium Azide as preservative State: Aff - Purified State: Liquid purified Ig fraction
Concentration:	lot specific
Purification:	Protein A column, followed by peptide affinity purification
Conjugation:	Unconjugated
Storage:	Store undiluted at 2-8°C for one month or (in aliquots) at -20°C for longer. Avoid repeated freezing and thawing.
Stability:	Shelf life: one year from despatch.
Gene Name:	frizzled class receptor 4
Database Link:	Entrez Gene 8322 Human Q9ULV1
Background:	FZD4 may play a role as a positive regulator of the Wingless type MMTV integration site signaling pathway.
Synonyms:	Fz-4, hFz4, FzE4
Note:	Molecular Weight: 59881 Da

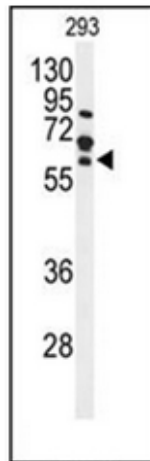


[View online »](#)

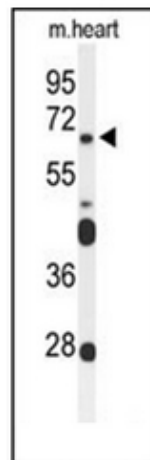
Protein Families: Druggable Genome, GPCR, Transmembrane

Protein Pathways: Basal cell carcinoma, Colorectal cancer, Melanogenesis, Pathways in cancer, Wnt signaling pathway

Product images:



Western blot analysis of FZD4 Antibody (C-term) in 293 cell line lysates (35ug/lane). FZD4 (arrow) was detected using the purified Pab;



Western blot analysis of FZD4 Antibody (C-term) in mouse heart tissue lysates (35ug/lane). FZD4 (arrow) was detected using the purified Pab.