

## Product datasheet for **AP51747PU-N**

### Frizzled 2 (FZD2) (C-term) Rabbit Polyclonal Antibody

#### Product data:

|                       |  |
|-----------------------|--|
| Product Type:         | Primary Antibodies   |
| Applications:         | WB   |
| Recommended Dilution: | <b>ELISA:</b> 1/1000.<br><b>Western Blot:</b> 1/100-1/500.   |
| Reactivity:           | Human  |
| Host:                 | Rabbit   |
| Isotype:              | Ig   |
| Clonality:            | Polyclonal   |
| Immunogen:            | KLH conjugated synthetic peptide between 533-563 amino acids from the C-terminal region of Human FZD2 / Frizzled-2   |
| Specificity:          | This antibody recognizes Human FZD2 / Frizzled-2 (C-term).   |
| Formulation:          | PBS containing 0.09% (W/V) Sodium Azide as preservative<br>State: Aff - Purified<br>State: Liquid purified Ig fraction   |
| Concentration:        | lot specific   |
| Purification:         | Protein A column, followed by peptide affinity purification  |
| Conjugation:          | Unconjugated   |
| Storage:              | Store undiluted at 2-8°C for one month or (in aliquots) at -20°C for longer.<br>Avoid repeated freezing and thawing.   |
| Stability:            | Shelf life: one year from despatch.  |
| Gene Name:            | frizzled class receptor 2  |
| Database Link:        | <a href="#">Entrez Gene 2535 Human Q14332</a>  |
| Background:           | Members of the 'frizzled' gene family encode 7-transmembrane domain proteins that are receptors for Wnt signaling proteins. The expression of the FZD2 gene appears to be developmentally regulated, with high levels of expression in fetal kidney and lung and in adult colon and ovary. |
| Synonyms:             | Fz-2, hFz2, FzE2   |



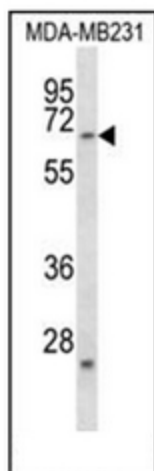
[View online »](#)

**Note:** **Molecular Weight:** 63554 Da

**Protein Families:** Druggable Genome, GPCR, Transmembrane

**Protein Pathways:** Basal cell carcinoma, Colorectal cancer, Melanogenesis, Pathways in cancer, Wnt signaling pathway

**Product images:**



Western blot analysis of FZD2 / Frizzled-2 Antibody (C-term) in MDA-MB231 cell line lysates (35ug/lane). This demonstrates the FZD2 antibody detected the FZD2 protein (arrow).