

Product datasheet for **AP51746PU-N**

FYB1 (C-term) Rabbit Polyclonal Antibody

Product data:

Product Type:	Primary Antibodies
Applications:	WB
Recommended Dilution:	ELISA: 1/1000. Western Blot: 1/100-1/500.
Reactivity:	Human
Host:	Rabbit
Isotype:	Ig
Clonality:	Polyclonal
Immunogen:	KLH conjugated synthetic peptide between 645-675 amino acids from the C-terminal region of Human FYN-binding protein
Specificity:	This antibody recognizes Human FYN-binding protein (C-term).
Formulation:	PBS containing 0.09% (W/V) Sodium Azide as preservative State: Aff - Purified State: Liquid purified Ig fraction
Concentration:	lot specific
Purification:	Protein A column, followed by peptide affinity purification
Conjugation:	Unconjugated
Storage:	Store undiluted at 2-8°C for one month or (in aliquots) at -20°C for longer. Avoid repeated freezing and thawing.
Stability:	Shelf life: one year from despatch.
Gene Name:	FYN binding protein
Database Link:	Entrez Gene 2533 Human O15117
Background:	FYB acts as an adapter protein of the FYN and LCP2 signaling cascades in T cells. Modulates the expression of interleukin-2 (IL-2). Involved in platelet activation. Prevents the degradation of SKAP1 and SKAP2.
Synonyms:	FYN-T-binding protein, FYB-120/130, p120/p130, SLAP-130, SLAP130

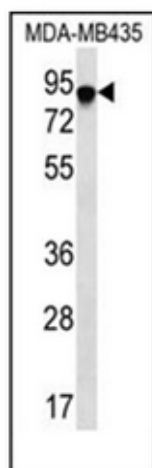


[View online »](#)

Note: **Molecular Weight:** 85387 Da

Protein Families: Druggable Genome

Product images:



Western blot analysis of FYB Antibody (C-term) in MDA-MB435 cell line lysates (35ug/lane). This demonstrates the FYB antibody detected the FYB protein (arrow).