

Product datasheet for **AP51736PU-N**

SKOR2 (C-term) Rabbit Polyclonal Antibody

Product data:

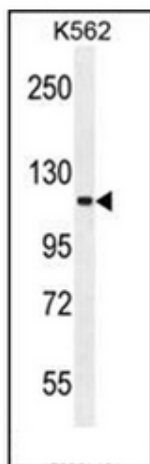
Product Type:	Primary Antibodies
Applications:	IHC, WB
Recommended Dilution:	ELISA: 1/1000. Western Blot: 1/100-1/500. Immunohistochemistry on Paraffin Sections: 1/10-1/50.
Reactivity:	Human
Host:	Rabbit
Isotype:	Ig
Clonality:	Polyclonal
Immunogen:	KLH conjugated synthetic peptide between 877-906 amino acids from the C-terminal region of human FUSSEL18
Specificity:	This antibody recognizes Human FUSSEL18 (C-term).
Formulation:	PBS containing 0.09% (W/V) Sodium Azide as preservative State: Aff - Purified State: Liquid purified Ig fraction
Concentration:	lot specific
Purification:	Protein A column, followed by peptide affinity purification
Conjugation:	Unconjugated
Storage:	Store undiluted at 2-8°C for one month or (in aliquots) at -20°C for longer. Avoid repeated freezing and thawing.
Stability:	Shelf life: one year from despatch.
Gene Name:	SKI family transcriptional corepressor 2
Database Link:	Entrez Gene 652991 Human Q2VWA4
Background:	SKOR2 exhibits transcriptional repressor activity (By similarity) and acts as a TGF-beta antagonist in the nervous system.
Synonyms:	SKOR2,SKI family transcriptional corepressor 2,CORL2



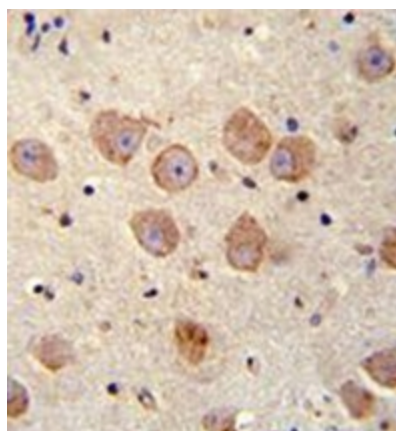
[View online »](#)

Note: **Molecular Weight:** 104235 Da

Product images:



Western blot analysis of FUSSEL18 Antibody (C-term) in K562 cell line lysates (35ug/lane). This demonstrates the FUSSEL18 antibody detected the FUSSEL18 protein (arrow).



Immunohistochemistry analysis in formalin fixed and paraffin embedded human brain tissue reacted with FUSSEL18 Antibody (C-term) followed by peroxidase conjugation of the secondary antibody and DAB staining.