

Product datasheet for **AP51731PU-N**

FSTL1 (C-term) Rabbit Polyclonal Antibody

Product data:

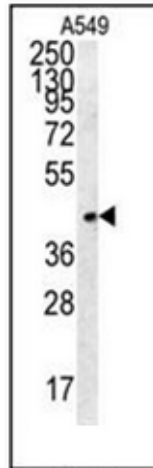
Product Type:	Primary Antibodies
Applications:	FC, IHC, WB
Recommended Dilution:	ELISA: 1/1000. Western Blot: 1/100-1/500. Flow Cytometry: 1/10-1/50. Immunohistochemistry on Paraffin Sections: 1/50-1/100.
Reactivity:	Human
Host:	Rabbit
Isotype:	Ig
Clonality:	Polyclonal
Immunogen:	KLH conjugated synthetic peptide between 285~318 amino acids from the C-terminal region of Human Follistatin-related protein 1
Specificity:	This antibody recognizes Human Follistatin-related protein 1 (C-term).
Formulation:	PBS containing 0.09% (W/V) Sodium Azide as preservative State: Aff - Purified State: Liquid purified Ig fraction
Concentration:	lot specific
Purification:	Protein A column, followed by peptide affinity purification
Conjugation:	Unconjugated
Storage:	Store undiluted at 2-8°C for one month or (in aliquots) at -20°C for longer. Avoid repeated freezing and thawing.
Stability:	Shelf life: one year from despatch.
Gene Name:	follistatin like 1
Database Link:	Entrez Gene 11167 Human Q12841
Synonyms:	FSTL1, FRP, Follistatin-like protein 1
Note:	Molecular Weight: 35 kDa



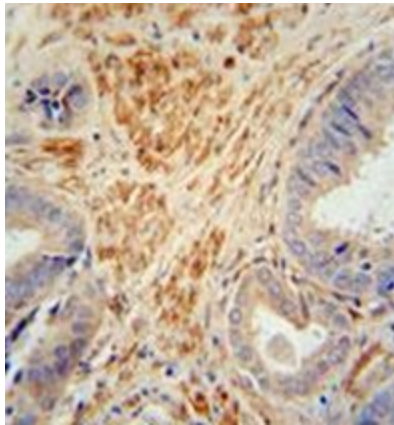
[View online »](#)

Protein Families: Secreted Protein

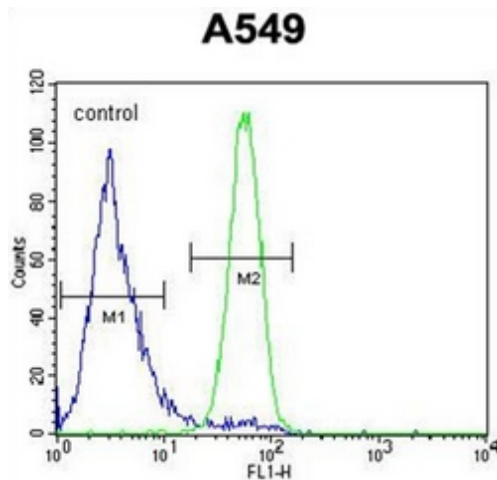
Product images:



Western blot analysis of FSTL1 Antibody (C-term) in A549 cell line lysates (35ug/lane). This demonstrates the FSTL1 antibody detected the FSTL1 protein (arrow).



Immunohistochemistry analysis in formalin fixed and paraffin embedded human prostate carcinoma reacted with FSTL1 Antibody (C-term) followed by peroxidase conjugation of the secondary antibody and DAB staining.



Flow cytometric analysis of A549 cells using FSTL1 Antibody (C-term) (right histogram) compared to a negative control cell (left histogram). FITC-conjugated goat-anti-rabbit secondary antibodies were used for the analysis.