

## Product datasheet for **AP51730PU-N**

### FSH beta (FSHB) (Center) Rabbit Polyclonal Antibody

#### Product data:

Product Type:	Primary Antibodies
Applications:	FC, WB
Recommended Dilution:	<b>ELISA:</b> 1/1000. <b>Western Blot:</b> 1/100-1/500. <b>Flow Cytometry:</b> 1/10-1/50.
Reactivity:	Human
Host:	Rabbit
Isotype:	Ig
Clonality:	Polyclonal
Immunogen:	KLH conjugated synthetic peptide between 35-64 amino acids from the Central region of Human FSHB/FSH.
Specificity:	This antibody recognizes Human Follicle-stimulating hormone / FSH (Center).
Formulation:	PBS containing 0.09% (W/V) Sodium Azide as preservative State: Aff - Purified State: Liquid purified Ig fraction
Concentration:	lot specific
Purification:	Protein A column, followed by peptide affinity purification
Conjugation:	Unconjugated
Storage:	Store undiluted at 2-8°C for one month or (in aliquots) at -20°C for longer. Avoid repeated freezing and thawing.
Stability:	Shelf life: one year from despatch.
Predicted Protein Size:	14700 Da
Gene Name:	follicle stimulating hormone beta subunit
Database Link:	<a href="#">Entrez Gene 2488 Human P01225</a>



[View online »](#)

**Background:**

The pituitary glycoprotein hormone family includes follicle-stimulating hormone, luteinizing hormone, chorionic gonadotropin, and thyroid-stimulating hormone. All of these glycoproteins consist of an identical alpha subunit and a hormone-specific beta subunit. This gene encodes the beta subunit of follicle-stimulating hormone. In conjunction with luteinizing hormone, follicle-stimulating hormone induces egg and sperm production. Alternative splicing results in two transcript variants encoding the same protein.

**Synonyms:**

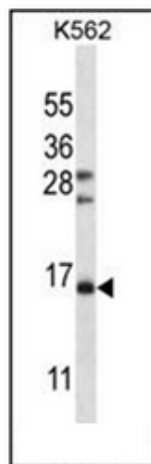
Follitropin beta chain, FSHB, FSH beta

**Protein Families:**

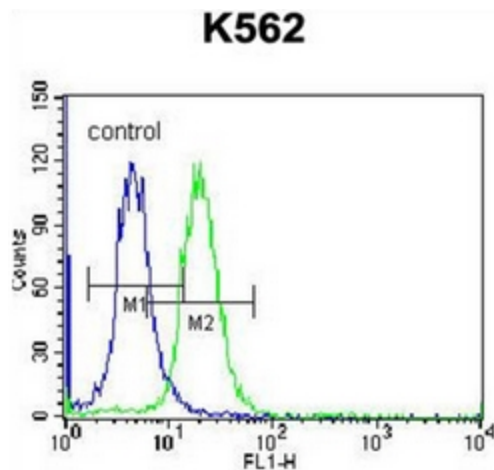
Druggable Genome, Secreted Protein

**Protein Pathways:**

GnRH signaling pathway, Neuroactive ligand-receptor interaction

**Product images:**


Western blot analysis of Follicle-stimulating hormone / FSH Antibody (Center) in K562 cell line lysates (35ug/lane). This demonstrates the FSHB/FSH antibody detected the FSHB/FSH protein (arrow).



Flow cytometric analysis of K562 cells using Follicle-stimulating hormone / FSH Antibody (Center) (right histogram) compared to a negative control cell (left histogram). FITC-conjugated donkey-anti-rabbit secondary antibodies were used for the analysis.