

Product datasheet for **AP51729PU-N**

FSD2 (N-term) Rabbit Polyclonal Antibody

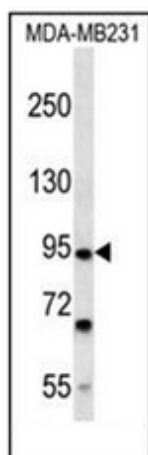
Product data:

Product Type:	Primary Antibodies
Applications:	IHC, WB
Recommended Dilution:	ELISA: 1/1000. Western Blot: 1/100-1/500. Immunohistochemistry on Paraffin Sections: 1/10-1/50.
Reactivity:	Human
Host:	Rabbit
Isotype:	Ig
Clonality:	Polyclonal
Immunogen:	KLH conjugated synthetic peptide between 61-89 amino acids from the N-terminal region of human FSD2
Specificity:	This antibody recognizes Human FSD2 (N-term).
Formulation:	PBS containing 0.09% (W/V) Sodium Azide as preservative State: Aff - Purified State: Liquid purified Ig fraction
Concentration:	lot specific
Purification:	Protein A column, followed by peptide affinity purification
Conjugation:	Unconjugated
Storage:	Store undiluted at 2-8°C for one month or (in aliquots) at -20°C for longer. Avoid repeated freezing and thawing.
Stability:	Shelf life: one year from despatch.
Gene Name:	fibronectin type III and SPRY domain containing 2
Database Link:	Entrez Gene 123722 Human A1L4K1
Synonyms:	SPRYD1
Note:	Molecular Weight: 85385 Da
Protein Families:	Druggable Genome

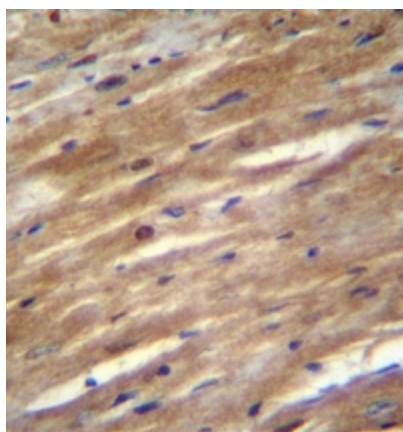


[View online »](#)

Product images:



Western blot analysis of FSD2 Antibody (N-term) in MDA-MB231 cell line lysates (35ug/lane). This demonstrates the FSD2 antibody detected the FSD2 protein (arrow).



Immunohistochemistry analysis in formalin fixed and paraffin embedded mouse heart tissue reacted with FSD2 Antibody (N-term) followed by peroxidase conjugation of the secondary antibody and DAB staining.T