

Product datasheet for **AP51728PU-N**

Fascin 3 (FSCN3) (C-term) Rabbit Polyclonal Antibody

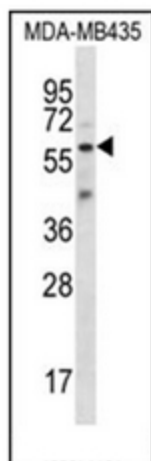
Product data:

Product Type:	Primary Antibodies
Applications:	WB
Recommended Dilution:	ELISA: 1/1000. Western Blot: 1/100-1/500.
Reactivity:	Human
Host:	Rabbit
Isotype:	Ig
Clonality:	Polyclonal
Immunogen:	KLH conjugated synthetic peptide between 295-324 amino acids from the C-terminal region of Human Fascin-3
Specificity:	This antibody recognizes Human Fascin-3 (C-term).
Formulation:	PBS containing 0.09% (W/V) Sodium Azide as preservative State: Aff - Purified State: Liquid purified Ig fraction
Concentration:	lot specific
Purification:	Protein A column, followed by peptide affinity purification
Conjugation:	Unconjugated
Storage:	Store undiluted at 2-8°C for one month or (in aliquots) at -20°C for longer. Avoid repeated freezing and thawing.
Stability:	Shelf life: one year from despatch.
Gene Name:	fascin actin-bundling protein 3
Database Link:	Entrez Gene 29999 Human Q9NQT6
Background:	FSCN3 acts as an actin bundling protein (By similarity).
Synonyms:	FSCN3, Testis fascin
Note:	Molecular Weight: 56624 Da



[View online »](#)

Product images:



Western blot analysis of Fascin-3 Antibody (C-term) in MDA-MB435 cell line lysates (35ug/lane).