

Product datasheet for **AP51724PU-N**

FRG1 (C-term) Rabbit Polyclonal Antibody

Product data:

Product Type:	Primary Antibodies
Applications:	WB
Recommended Dilution:	Peptide ELISA: 1/1000. Western Blot: 1/1000.
Reactivity:	Human
Host:	Rabbit
Isotype:	Ig
Clonality:	Polyclonal
Immunogen:	KLH conjugated synthetic peptide between 230-256 amino acids from the C-terminal region of Human FRG1
Specificity:	This antibody recognizes Human FRG1 (C-term).
Formulation:	PBS containing 0.09% (W/V) Sodium Azide as preservative State: Aff - Purified State: Liquid purified Ig fraction
Concentration:	lot specific
Purification:	Protein A column, followed by peptide affinity purification
Conjugation:	Unconjugated
Storage:	Store undiluted at 2-8°C for one month or (in aliquots) at -20°C for longer. Avoid repeated freezing and thawing.
Stability:	Shelf life: one year from despatch.
Gene Name:	FSHD region gene 1
Database Link:	Entrez Gene 2483 Human Q14331
Background:	This gene maps to a location 100 kb centromeric of the repeat units on chromosome 4q35 which are deleted in facioscapulohumeral muscular dystrophy (FSHD). It is evolutionarily conserved and has related sequences on multiple human chromosomes but DNA sequence analysis did not reveal any homology to known genes. In vivo studies demonstrate the encoded protein is localized to the nucleolus.

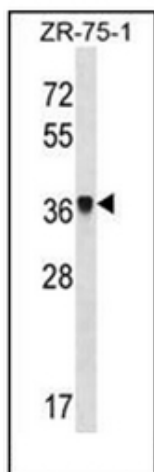


[View online »](#)

Synonyms: FRG1A; FSG1

Note: **Molecular Weight:** 29172 Da

Product images:



Western blot analysis of FRG1 Antibody (C-term) in ZR-75-1 cell line lysates (35ug/lane). This demonstrates the FRG1 antibody detected the FRG1 protein (arrow).