

Product datasheet for **AP51723PU-N**

FRAT2 (C-term) Rabbit Polyclonal Antibody

Product data:

Product Type:	Primary Antibodies
Applications:	IF, IHC, WB
Recommended Dilution:	ELISA: 1/1000. Western Blot: 1/100-1/500. Immunofluorescence: 1/10-1/50. Immunohistochemistry on Paraffin Sections: 1/10-1/50.
Reactivity:	Human
Host:	Rabbit
Isotype:	Ig
Clonality:	Polyclonal
Immunogen:	KLH conjugated synthetic peptide between 210-233 amino acids from the C-terminal region of human FRAT2
Specificity:	This antibody recognizes Human FRAT2 (C-term).
Formulation:	PBS containing 0.09% (W/V) Sodium Azide as preservative State: Aff - Purified State: Liquid purified Ig fraction
Concentration:	lot specific
Purification:	Protein A column, followed by peptide affinity purification
Conjugation:	Unconjugated
Storage:	Store undiluted at 2-8°C for one month or (in aliquots) at -20°C for longer. Avoid repeated freezing and thawing.
Stability:	Shelf life: one year from despatch.
Gene Name:	frequently rearranged in advanced T-cell lymphomas 2
Database Link:	Entrez Gene 23401 Human O75474
Background:	The protein encoded by this intronless gene belongs to the GSK-3-binding protein family. Studies show that this protein plays a role as a positive regulator of the WNT signaling pathway. It may be upregulated in tumor progression.



[View online »](#)

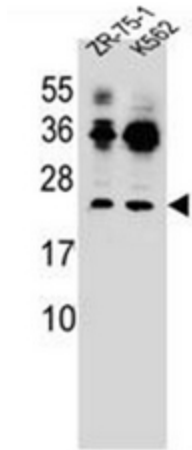
Synonyms: GSK-3-binding protein Frat-2

Note: **Molecular Weight:** 24051 Da

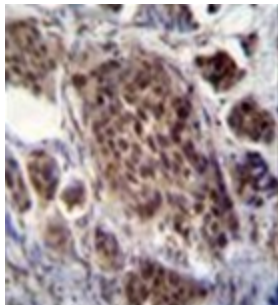
Protein Families: Druggable Genome, ES Cell Differentiation/IPS

Protein Pathways: Wnt signaling pathway

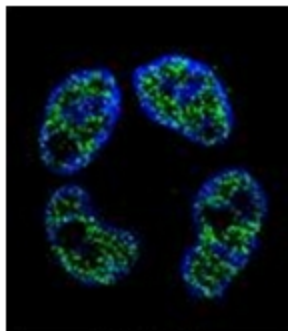
Product images:



Western blot analysis of FRAT2 Antibody (C-term) in ZR-75-1, K562 cell line lysates (35ug/lane). This demonstrates the FRAT2 antibody detected the FRAT2 protein (arrow).



Immunohistochemistry analysis in formalin fixed and paraffin embedded human bladder carcinoma reacted with FRAT2 Antibody (C-term) followed by peroxidase conjugation of the secondary antibody and DAB staining.



Confocal immunofluorescent analysis of FRAT2 Antibody (C-term) with ZR-75-1 cell followed by Alexa Fluor 488-conjugated goat anti-rabbit IgG (green). DAPI was used to stain the cell nuclear (blue).