

Product datasheet for **AP51716PU-N**

FOXN1 (Center) Rabbit Polyclonal Antibody

Product data:

Product Type:	Primary Antibodies
Applications:	FC, WB
Recommended Dilution:	ELISA: 1/1000. Western Blot: 1/100-1/500. Flow Cytometry: 1/10-1/50.
Reactivity:	Human
Host:	Rabbit
Isotype:	Ig
Clonality:	Polyclonal
Immunogen:	KLH conjugated synthetic peptide between 357-386 amino acids from the Central region of human FOXN1
Specificity:	This antibody recognizes Human FOXN1 (Center).
Formulation:	PBS containing 0.09% (W/V) Sodium Azide as preservative State: Aff - Purified State: Liquid purified Ig fraction
Concentration:	lot specific
Purification:	Protein A column, followed by peptide affinity purification
Conjugation:	Unconjugated
Storage:	Store undiluted at 2-8°C for one month or (in aliquots) at -20°C for longer. Avoid repeated freezing and thawing.
Stability:	Shelf life: one year from despatch.
Gene Name:	forkhead box N1
Database Link:	Entrez Gene 8456 Human O15353



[View online »](#)

Background:

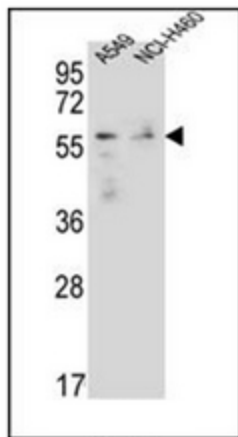
Mutations in the winged-helix transcription factor gene at the nude locus in mice and rats produce the pleiotropic phenotype of hairlessness and athymia, resulting in a severely compromised immune system. This gene is orthologous to the mouse and rat genes and encodes a similar DNA-binding transcription factor that is thought to regulate keratin gene expression. A mutation in this gene has been correlated with T-cell immunodeficiency, the skin disorder congenital alopecia, and nail dystrophy. Alternative splicing in the 5' UTR of this gene has been observed. [provided by RefSeq].

Synonyms:

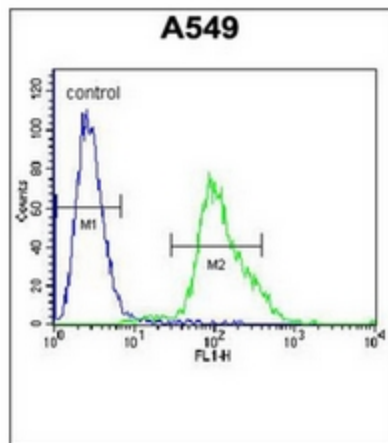
RONU, WHN

Note:**Molecular Weight:** 68925 Da**Protein Families:**

Druggable Genome, Transcription Factors

Product images:

Western blot analysis of FOXN1 Antibody (Center) in A549, NCI-H460 cell line lysates (35ug/lane). This demonstrates the FOXN1 antibody detected the FOXN1 protein (arrow).



Flow cytometric analysis of A549 cells using FOXN1 Antibody (Center) (right histogram) compared to a negative control cell (left histogram). FITC-conjugated goat-anti-rabbit secondary antibodies were used for the analysis.