

Product datasheet for **AP51715PU-N**

FOXL2 (N-term) Rabbit Polyclonal Antibody

Product data:

Product Type:	Primary Antibodies
Applications:	FC, WB
Recommended Dilution:	ELISA: 1/1000. Western Blot: 1/100-1/500. Flow Cytometry: 1/10-1/50.
Reactivity:	Human
Host:	Rabbit
Isotype:	Ig
Clonality:	Polyclonal
Immunogen:	KLH conjugated synthetic peptide between 10-37 amino acids from the N-terminal region of human FOXL2
Specificity:	This antibody recognizes Human FOXL2 (N-term).
Formulation:	PBS containing 0.09% (W/V) Sodium Azide as preservative State: Aff - Purified State: Liquid purified Ig fraction
Concentration:	lot specific
Purification:	Protein A column, followed by peptide affinity purification
Conjugation:	Unconjugated
Storage:	Store undiluted at 2-8°C for one month or (in aliquots) at -20°C for longer. Avoid repeated freezing and thawing.
Stability:	Shelf life: one year from despatch.
Gene Name:	forkhead box L2
Database Link:	Entrez Gene 668 Human P58012
Background:	This gene encodes a forkhead transcription factor. The protein contains a fork-head DNA-binding domain and may play a role in ovarian development and function. Mutations in this gene are a cause of blepharophimosis syndrome and premature ovarian failure 3.
Synonyms:	Forkhead box protein L2

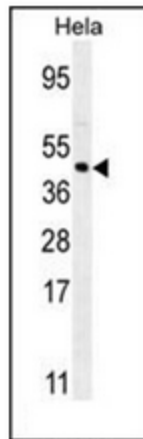


[View online »](#)

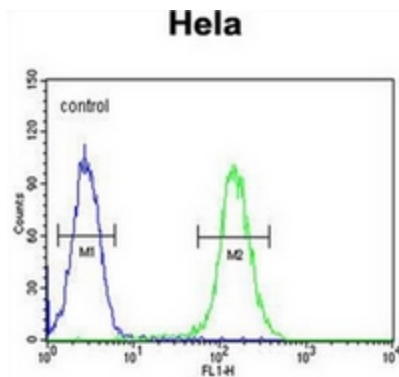
Note: **Molecular Weight:** 38772 Da

Protein Families: Druggable Genome, Transcription Factors

Product images:



Western blot analysis of FOXL2 Antibody (N-term) in HeLa cell line lysates (35ug/lane). This demonstrates the FOXL2 antibody detected the FOXL2 protein (arrow).



Flow cytometric analysis of HeLa cells using FOXL2 Antibody (N-term) (right histogram) compared to a negative control cell (left histogram). FITC-conjugated goat-anti-rabbit secondary antibodies were used for the analysis.