

Product datasheet for **AP51714PU-N**

FOXL1 (Center) Rabbit Polyclonal Antibody

Product data:

Product Type:	Primary Antibodies
Applications:	WB
Recommended Dilution:	ELISA: 1/1000. Western Blot: 1/100-1/500.
Reactivity:	Human, Mouse
Host:	Rabbit
Isotype:	Ig
Clonality:	Polyclonal
Immunogen:	KLH conjugated synthetic peptide between 99~129 amino acids from the Center region of human FOXL1 / FKHL11
Specificity:	This antibody recognizes Human and Mouse FOXL1 / FKHL11 (Center).
Formulation:	PBS containing 0.09% (W/V) Sodium Azide as preservative State: Aff - Purified State: Liquid purified Ig fraction
Concentration:	lot specific
Purification:	Protein A column, followed by peptide affinity purification
Conjugation:	Unconjugated
Storage:	Store undiluted at 2-8°C for one month or (in aliquots) at -20°C for longer. Avoid repeated freezing and thawing.
Stability:	Shelf life: one year from despatch.
Gene Name:	forkhead box L1
Database Link:	Entrez Gene 14241 Mouse Entrez Gene 2300 Human Q12952
Background:	The forkhead domain is a 100-amino acid monomeric DNA binding motif originally identified as a region of homology between the Drosophila forkhead protein and rat HNF3. Pierrou et al. (1994) identified 7 human genes containing forkhead domains and designated them forkhead related activators (FREAC) 1 through 7.
Synonyms:	Forkhead box protein L1, FREAC7

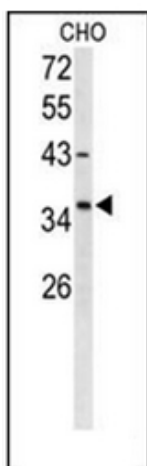


[View online »](#)

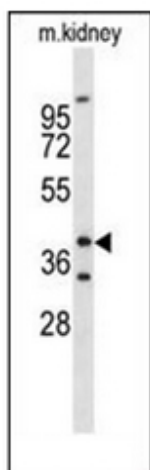
Note: **Molecular Weight:** 36490 Da

Protein Families: Transcription Factors

Product images:



Western blot analysis of FOXL1 / FKHL11 Antibody (Center) in CHO cell line lysates (35ug/lane). FOXL1 (arrow) was detected using the purified Pab;



Western blot analysis of FOXL1 / FKHL11 Antibody (Center) in mouse kidney tissue lysates (35ug/lane). FOXL1 (arrow) was detected using the purified Pab.