

Product datasheet for **AP51709PU-N**

FOXI1 (Center) Rabbit Polyclonal Antibody

Product data:

Product Type:	Primary Antibodies
Applications:	WB
Recommended Dilution:	ELISA: 1/1000. Western Blot: 1/100-1/500.
Reactivity:	Human
Host:	Rabbit
Isotype:	Ig
Clonality:	Polyclonal
Immunogen:	KLH conjugated synthetic peptide between 231-261 amino acids from the Central region of Human FOXI1 / FKHL10
Specificity:	This antibody recognizes Human FOXI1 / FKHL10 (Center).
Formulation:	PBS containing 0.09% (W/V) Sodium Azide as preservative State: Aff - Purified State: Liquid purified Ig fraction
Concentration:	lot specific
Purification:	Protein A column, followed by peptide affinity purification
Conjugation:	Unconjugated
Storage:	Store undiluted at 2-8°C for one month or (in aliquots) at -20°C for longer. Avoid repeated freezing and thawing.
Stability:	Shelf life: one year from despatch.
Gene Name:	forkhead box I1
Database Link:	Entrez Gene 2299 Human Q12951



[View online »](#)

Background:

This gene belongs to the forkhead family of transcription factors which is characterized by a distinct forkhead domain. The specific function of this gene has not yet been determined; however, it is possible that this gene plays an important role in the development of the cochlea and vestibulum, as well as embryogenesis. Mutations in this gene may be associated with the common cavity phenotype. Two transcript variants encoding different isoforms have been found for this gene.

Synonyms:

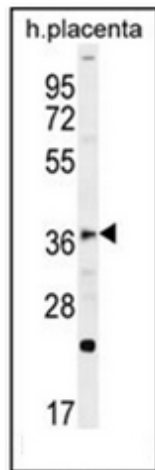
Forkhead box protein I1 ,FREAC6, HFH3

Note:

Molecular Weight: 40973 Da

Protein Families:

Transcription Factors

Product images:

Western blot analysis of FOX11 / FKHL10 Antibody (Center) in human placenta tissue lysates (35ug/lane). This demonstrates the FOX11 antibody detected the FOX11 protein (arrow).