

Product datasheet for **AP51705PU-N**

FOXD4 (Center) Rabbit Polyclonal Antibody

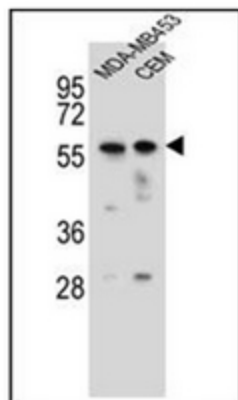
Product data:

Product Type:	Primary Antibodies
Applications:	WB
Recommended Dilution:	ELISA: 1/1000. Western Blot: 1/100-1/500.
Reactivity:	Human
Host:	Rabbit
Isotype:	Ig
Clonality:	Polyclonal
Immunogen:	KLH conjugated synthetic peptide between 189-218 amino acids from the Central region of Human FOXD4 / FKHL9
Specificity:	This antibody recognizes Human FOXD4 / FKHL6 (Center).
Formulation:	PBS containing 0.09% (W/V) Sodium Azide as preservative State: Aff - Purified State: Liquid purified Ig fraction
Concentration:	lot specific
Purification:	Protein A column, followed by peptide affinity purification
Conjugation:	Unconjugated
Storage:	Store undiluted at 2-8°C for one month or (in aliquots) at -20°C for longer. Avoid repeated freezing and thawing.
Stability:	Shelf life: one year from despatch.
Gene Name:	forkhead box D4
Database Link:	Entrez Gene 2298 Human Q12950
Synonyms:	Forkhead box protein D4, Myeloid factor-alpha, FOXD4A, FREAC5
Note:	Molecular Weight: 47309 Da
Protein Families:	Transcription Factors



[View online »](#)

Product images:



Western blot analysis of FOXD4 / FKHL9 Antibody (Center) in MDA-MB453, CEM cell line lysates (35ug/lane). This demonstrates the FOXD4 antibody detected the FOXD4 protein (arrow).