

## Product datasheet for **AP51699PU-N**

### **FRA2 (FOSL2) (Center) Rabbit Polyclonal Antibody**

#### **Product data:**

Product Type:	Primary Antibodies
Applications:	IHC, WB
Recommended Dilution:	<b>ELISA:</b> 1/1000. <b>Western Blot:</b> 1/100-1/500. <b>Immunohistochemistry on Paraffin Sections:</b> 1/50-1/100.
Reactivity:	Hamster, Human
Host:	Rabbit
Isotype:	Ig
Clonality:	Polyclonal
Immunogen:	KLH conjugated synthetic peptide between 95-122 amino acids from the Central region of Human Fos-related antigen 2
Specificity:	This antibody recognizes Human and Hamster Fos-related antigen 2 (Center).
Formulation:	PBS containing 0.09% (W/V) Sodium Azide as preservative State: Aff - Purified State: Liquid purified Ig fraction
Concentration:	lot specific
Purification:	Protein A column, followed by peptide affinity purification
Conjugation:	Unconjugated
Storage:	Store undiluted at 2-8°C for one month or (in aliquots) at -20°C for longer. Avoid repeated freezing and thawing.
Stability:	Shelf life: one year from despatch.
Gene Name:	FOS like 2, AP-1 transcription factor subunit
Database Link:	<a href="#">Entrez Gene 2355 Human P15408</a>
Background:	The Fos gene family consists of 4 members: FOS, FOSB, FOSL1, and FOSL2. These genes encode leucine zipper proteins that can dimerize with proteins of the JUN family, thereby forming the transcription factor complex AP-1. As such, the FOS proteins have been implicated as regulators of cell proliferation, differentiation, and transformation.



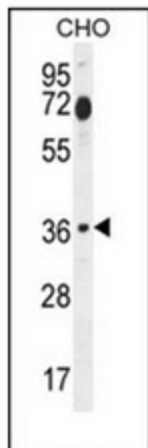
[View online »](#)

Synonyms: FOSL2, FRA2, FRA-2

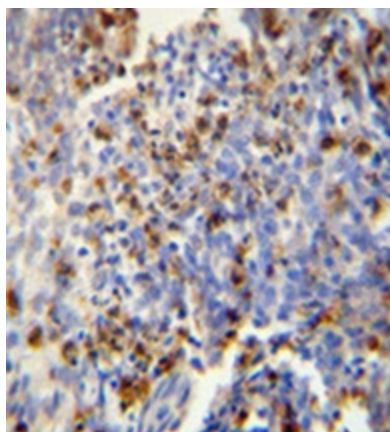
Note: **Molecular Weight:** 35193 Da

Protein Families: Druggable Genome, Transcription Factors

### Product images:



Western blot analysis of FOSL2 Antibody (Center) in CHO cell line lysates (35ug/lane). This demonstrates the FOSL2 antibody detected the FOSL2 protein (arrow).



Immunohistochemistry analysis in formalin fixed and paraffin embedded human lung carcinoma reacted with FOSL2 Antibody (Center) followed by peroxidase conjugation of the secondary antibody and DAB staining.