

Product datasheet for **AP51691PU-N**

FNBP1L (Center) Rabbit Polyclonal Antibody

Product data:

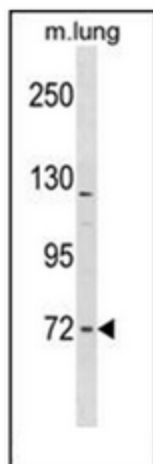
Product Type:	Primary Antibodies
Applications:	WB
Recommended Dilution:	ELISA: 1/1000. Western Blot: 1/100-1/500.
Reactivity:	Human, Mouse
Host:	Rabbit
Isotype:	Ig
Clonality:	Polyclonal
Immunogen:	KLH conjugated synthetic peptide between 348-377 amino acids from the Central region of Human FNBP1L.
Specificity:	This antibody recognizes Human and Mouse FNBP1L (Center).
Formulation:	PBS containing 0.09% (W/V) Sodium Azide as preservative State: Aff - Purified State: Liquid purified Ig fraction
Concentration:	lot specific
Purification:	Protein A column, followed by peptide affinity purification
Conjugation:	Unconjugated
Storage:	Store undiluted at 2-8°C for one month or (in aliquots) at -20°C for longer. Avoid repeated freezing and thawing.
Stability:	Shelf life: one year from despatch.
Gene Name:	formin binding protein 1 like
Database Link:	Entrez Gene 214459 Mouse Entrez Gene 54874 Human Q5T0N5
Background:	The protein encoded by this gene binds to both CDC42 and N-WASP. This protein promotes CDC42-induced actin polymerization by activating the N-WASP-WIP complex and, therefore, is involved in a pathway that links cell surface signals to the actin cytoskeleton. Alternative splicing results in multiple transcript variants encoding different isoforms.
Synonyms:	C1orf39, TOCA1



[View online »](#)

Note: **Molecular Weight:** 69977 Da

Product images:



Western blot analysis of FNBP1L Antibody in mouse lung tissue lysates (35ug/lane). This demonstrates the FNBP1L antibody detected the FNBP1L protein (arrow).