

## Product datasheet for **AP51690PU-N**

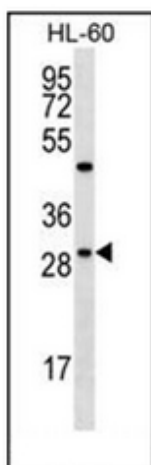
### **FMR1NB (N-term) Rabbit Polyclonal Antibody**

#### **Product data:**

Product Type:	Primary Antibodies
Applications:	WB
Recommended Dilution:	<b>ELISA:</b> 1/1000. <b>Western Blot:</b> 1/100-1/500.
Reactivity:	Human
Host:	Rabbit
Isotype:	Ig
Clonality:	Polyclonal
Immunogen:	KLH conjugated synthetic peptide between 1-30 amino acids from the N-terminal region of Human FMR1NB
Specificity:	This antibody recognizes Human FMR1NB (N-term).
Formulation:	PBS containing 0.09% (W/V) Sodium Azide as preservative State: Aff - Purified State: Liquid purified Ig fraction
Concentration:	lot specific
Purification:	Affinity Chromatography on Protein A
Conjugation:	Unconjugated
Storage:	Store undiluted at 2-8°C for one month or (in aliquots) at -20°C for longer. Avoid repeated freezing and thawing.
Stability:	Shelf life: one year from despatch.
Gene Name:	fragile X mental retardation 1 neighbor
Database Link:	<a href="#">Entrez Gene 158521 Human Q8N0W7</a>
Synonyms:	Fragile X mental retardation 1 neighbor protein, NY-SAR-35, CT37
Note:	<b>Molecular Weight:</b> 29241 Da
Protein Families:	Transmembrane



[View online »](#)

**Product images:**

Western blot analysis of FMR1NB Antibody (N-term) in HL-60 cell line lysates (35ug/lane). This demonstrates the FMR1NB antibody detected the FMR1NB protein (arrow).