

## Product datasheet for **AP51688PU-N**

### FLVCR2 (C-term) Rabbit Polyclonal Antibody

#### Product data:

Product Type:	Primary Antibodies
Applications:	WB
Recommended Dilution:	<b>ELISA:</b> 1/1000. <b>Western Blot:</b> 1/100-1/500.
Reactivity:	Human
Host:	Rabbit
Isotype:	Ig
Clonality:	Polyclonal
Immunogen:	KLH conjugated synthetic peptide between 485~515 amino acids from the C-terminal region of Human FLVCR2.
Specificity:	This antibody recognizes Human FLVCR2 (C-term).
Formulation:	PBS containing 0.09% (W/V) Sodium Azide as preservative State: Aff - Purified State: Liquid purified Ig fraction
Concentration:	lot specific
Purification:	Affinity Chromatography on Protein A
Conjugation:	Unconjugated
Storage:	Store undiluted at 2-8°C for one month or (in aliquots) at -20°C for longer. Avoid repeated freezing and thawing.
Stability:	Shelf life: one year from despatch.
Gene Name:	feline leukemia virus subgroup C cellular receptor family member 2
Database Link:	<a href="#">Entrez Gene 55640 Human Q9UPI3</a>
Background:	The FLVCR2 gene encodes a transmembrane protein that belongs to the major facilitator superfamily of secondary carriers that transport small solutes in response to chemiosmotic ion gradients, such as calcium.
Synonyms:	C14orf58, Calcium-chelate transporter, CCT

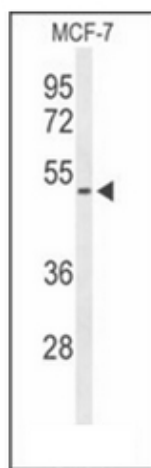


[View online »](#)

Note: **Molecular Weight:** 57241 Da

Protein Families: Transmembrane

**Product images:**



Western blot analysis of FLVCR2 Antibody (C-term) in MCF-7 cell line lysates (35ug/lane). FLVCR2 (arrow) was detected using the purified Pab.