

Product datasheet for **AP51675PU-N**

FLAD1 (C-term) Rabbit Polyclonal Antibody

Product data:

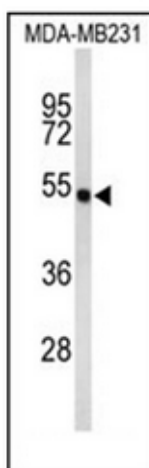
Product Type:	Primary Antibodies
Applications:	WB
Recommended Dilution:	ELISA: 1/1000. Western Blot: 1/100-1/500.
Reactivity:	Human
Host:	Rabbit
Isotype:	Ig
Clonality:	Polyclonal
Immunogen:	KLH conjugated synthetic peptide between 558~587 amino acids from the C-terminal region of Human FAD synthetase.
Specificity:	This antibody recognizes Human FAD synthetase (C-term).
Formulation:	PBS containing 0.09% (W/V) sodium azide as preservative State: Aff - Purified State: Liquid purified Ig fraction
Concentration:	lot specific
Purification:	Affinity Chromatography on Protein A
Conjugation:	Unconjugated
Storage:	Store undiluted at 2-8°C for one month or (in aliquots) at -20°C for longer. Avoid repeated freezing and thawing.
Stability:	Shelf life: one year from despatch.
Gene Name:	flavin adenine dinucleotide synthetase 1
Database Link:	Entrez Gene 80308 Human Q8NFF5
Background:	FLAD1 encodes the enzyme that catalyzes adenylation of flavin mononucleotide (FMN) to form flavin adenine dinucleotide (FAD) coenzyme.
Synonyms:	FLAD1, PP591
Note:	Molecular Weight: 54;188 Da (Isoform 2)



[View online »](#)

Protein Pathways: Metabolic pathways, Riboflavin metabolism

Product images:



Western blot analysis of FAD synthetase Antibody (C-term) in MDA-MB231 cell line lysates (35ug/lane).