

Product datasheet for **AP51674PU-N**

Fukutin (FKTN) (Center) Rabbit Polyclonal Antibody

Product data:

Product Type:	Primary Antibodies
Applications:	IHC, WB
Recommended Dilution:	ELISA: 1/1000. Western Blot: 1/100-1/500. Immunohistochemistry on Paraffin Sections: 1/10-1/50.
Reactivity:	Human, Mouse
Host:	Rabbit
Isotype:	Ig
Clonality:	Polyclonal
Immunogen:	KLH conjugated synthetic peptide between 184-214 amino acids from the Central region of Human Fukutin.
Specificity:	This antibody recognizes Human and Mouse FKTN (Center).
Formulation:	PBS containing 0.09% (W/V) Sodium Azide as preservative State: Aff - Purified State: Liquid purified Ig fraction
Concentration:	lot specific
Purification:	Protein A column, followed by peptide affinity purification
Conjugation:	Unconjugated
Storage:	Store undiluted at 2-8°C for one month or (in aliquots) at -20°C for longer. Avoid repeated freezing and thawing.
Stability:	Shelf life: one year from despatch.
Gene Name:	fukutin
Database Link:	Entrez Gene 246179 Mouse Entrez Gene 2218 Human O75072



[View online »](#)

Background:

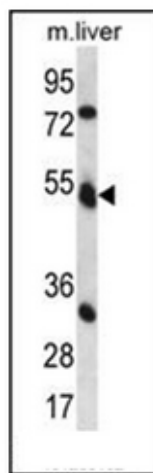
The protein encoded by this gene is a putative transmembrane protein that is localized to the cis-Golgi compartment, where it may be involved in the glycosylation of alpha-dystroglycan in skeletal muscle. The encoded protein is thought to be a glycosyltransferase and could play a role in brain development. Defects in this gene are a cause of Fukuyama-type congenital muscular dystrophy (FCMD), Walker-Warburg syndrome (WWS), limb-girdle muscular dystrophy type 2M (LGMD2M), and dilated cardiomyopathy type 1X (CMD1X). Alternatively spliced transcript variants have been found for this gene.

Synonyms:

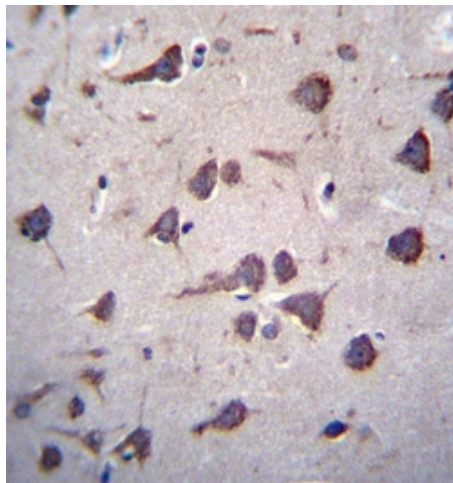
FKTN, FCMD

Note:**Molecular Weight:** 53724 Da**Protein Families:**

Transmembrane

Product images:

Western blot analysis of Fukutin Antibody (Center) in mouse liver tissue lysates (35ug/lane). This demonstrates the FKTN antibody detected the FKTN protein (arrow).



Immunohistochemistry analysis in formalin fixed and paraffin embedded human brain tissue reacted with Fukutin Antibody (Center) followed by peroxidase conjugation of the secondary antibody and DAB staining.