

Product datasheet for **AP51673PU-N**

FKBP7 (C-term) Rabbit Polyclonal Antibody

Product data:

Product Type:	Primary Antibodies
Applications:	IHC, WB
Recommended Dilution:	Immunohistochemistry on Paraffin sections: 1/10-1/50. Western blot: 1/100-1/500. Enzyme immunoassay: 1/1000.
Reactivity:	Human
Host:	Rabbit
Isotype:	Ig
Clonality:	Polyclonal
Immunogen:	Synthetic peptide - KLH conjugated - corresponding to the C-terminal region (between 194-224aa) of human FKBP7 / FKBP23
Specificity:	This antibody recognizes FKBP7 / FKBP23 at C-term.
Formulation:	PBS with 0.09% (W/V) Sodium azide State: Aff - Purified State: Liquid purified Ig fraction
Concentration:	lot specific
Purification:	Purified through a Protein A column followed by peptide affinity purification
Conjugation:	Unconjugated
Storage:	Store undiluted at 2-8°C for one month or (in aliquots) at -20°C for longer. Avoid repeated freezing and thawing.
Stability:	Shelf life: one year from despatch.
Gene Name:	FK506 binding protein 7
Database Link:	Entrez Gene 51661 Human Q9Y680
Background:	The protein encoded by the FKBP7 gene belongs to the FKBP-type peptidyl-prolyl cis/trans isomerase (PPIase) family. Members of this family exhibit PPIase activity and function as molecular chaperones. A similar protein in mouse is located in the endoplasmic reticulum and binds calcium.



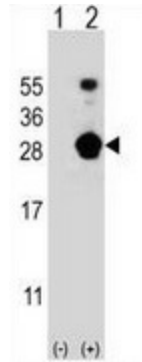
[View online »](#)

Synonyms: FK506-binding protein 7, PPlase FKBP7, Rotamase

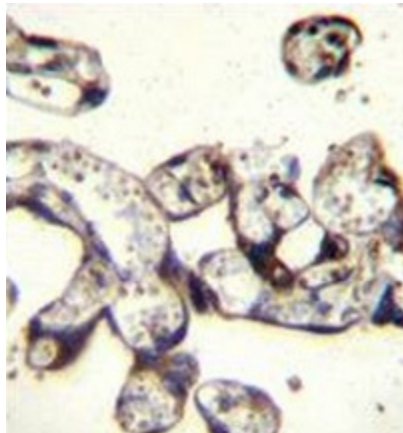
Note: **Molecular Weight:** 30009 Da

Protein Families: Druggable Genome, Transmembrane

Product images:



Western blot analysis of FKBP7 (arrow) using FKBP7 / FKBP23 antibody. (C-term); 293 cell lysates (2 ug/lane) either nontransfected (Lane 1) or transiently transfected (Lane 2) with the FKBP7 gene.



Immunohistochemistry analysis in human placenta tissue (Formalin-fixed, Paraffin-embedded) using FKBP7 / FKBP23 antibody. (C-term), followed by peroxidase conjugation of the secondary antibody and DAB staining. This data demonstrates the use of FKBP7 antibody for IHC. Clinical relevance has not been evaluated.