

Product datasheet for **AP51671PU-N**

FIGN (C-term) Rabbit Polyclonal Antibody

Product data:

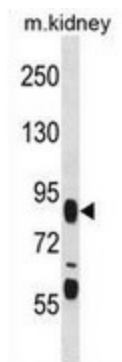
Product Type:	Primary Antibodies
Applications:	WB
Recommended Dilution:	Western Blot: 1/1000.
Reactivity:	Human, Mouse, Zebrafish
Host:	Rabbit
Isotype:	Ig
Clonality:	Polyclonal
Immunogen:	Synthetic peptide - KLH conjugated - corresponding to the C-terminal region (between 614-643aa) of human Fidgetin
Specificity:	This antibody recognizes Fidgetin at C-term.
Formulation:	PBS with 0.09% (W/V) Sodium azide State: Aff - Purified State: Liquid purified Ig fraction
Concentration:	lot specific
Purification:	Purified through a protein A column followed by peptide affinity purification
Conjugation:	Unconjugated
Storage:	Store the antibody undiluted at 2-8°C for one month or (in aliquots) at -20°C for longer. Avoid repeated freezing and thawing.
Stability:	Shelf life: one year from despatch.
Gene Name:	fidgetin, microtubule severing factor
Database Link:	Entrez Gene 55137 Human Q5HY92
Background:	Fidgetin is a member of the 'meiotic' or subfamily-7 group of ATPases associated with diverse cellular activities (AAA proteins). Fidgetin can interact with itself and this interaction can be abolished by truncating either the N- or C-terminus of the protein. AAA proteins are molecular chaperones that facilitate membrane fusion, proteolysis, peroxisome biogenesis, endosome sorting and meiotic spindle formation.
Synonyms:	FIGN



[View online »](#)

Note: **Molecular Weight:** 82146 Da

Product images:



Western blot analysis in mouse kidney tissue lysates (35ug/lane) using Fidgetin antibody. This demonstrates the FIGN antibody detected the FIGN protein (arrow).