

Product datasheet for **AP51668PU-N**

FHOD1 (C-term) Rabbit Polyclonal Antibody

Product data:

Product Type:	Primary Antibodies
Applications:	WB
Recommended Dilution:	This antibody is suitable for Western blotting . The suggested dilution is: 1/100-1/500.
Reactivity:	Human, Mouse
Host:	Rabbit
Isotype:	Ig
Clonality:	Polyclonal
Immunogen:	Synthetic peptide - KLH conjugated - corresponding to the C-terminal region (between 984-1013aa) of human FHOD1.
Specificity:	This antibody detects FHOD1 at C-Term.
Formulation:	PBS with 0.09% (W/V) Sodium Azide. State: Aff - Purified State: Liquid purified Ig fraction
Concentration:	lot specific
Purification:	Purified through a protein A column; followed by peptide affinity purification.
Conjugation:	Unconjugated
Storage:	Store the antibody undiluted at 2-8°C for one month or (in aliquots) at -20°C for longer. Avoid repeated freezing and thawing.
Stability:	Shelf life: one year from despatch.
Gene Name:	formin homology 2 domain containing 1
Database Link:	Entrez Gene 234686 Mouse Entrez Gene 29109 Human Q9Y613



[View online »](#)

Background:

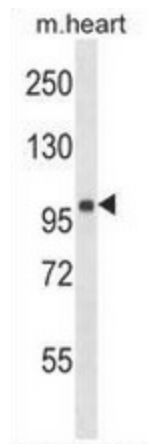
The FHOD1 gene encodes a protein which is a member of the formin/diaphanous family of proteins. The gene is ubiquitously expressed but is found in abundance in the spleen. The encoded protein has sequence homology to diaphanous and formin proteins within the Formin Homology (FH)1 and FH2 domains. It also contains a coiled-coil domain, a collagen-like domain, two nuclear localization signals, and several potential PKC and PKA phosphorylation sites. It is a predominantly cytoplasmic protein and is expressed in a variety of human cell lines.

Synonyms:

FHOS, FHOS1

Note:

Molecular Weight: 126551 Da

Product images:


Western blot analysis in mouse heart tissue lysates (35ug/lane) using FHOD1 antibody. This demonstrates the FHOD1 antibody detected the FHOD1 protein (arrow).