

Product datasheet for **AP51664PU-N**

FGL1 (C-term) Rabbit Polyclonal Antibody

Product data:

Product Type:	Primary Antibodies
Applications:	IHC, WB
Recommended Dilution:	This antibody is suitable for Immunohistochemistry on paraffin sections and Western blotting. The suggested dilution is: Immunohistochemistry on paraffin sections: 1/10-1/50 Western blotting: 1/100-1/500
Reactivity:	Human
Host:	Rabbit
Isotype:	Ig
Clonality:	Polyclonal
Immunogen:	KLH conjugated synthetic peptide from the C-terminal region (between 225-256 aa) of human FGL1.
Specificity:	This antibody detects Human FGL1 at C-terminal region.
Formulation:	PBS with 0.09% (W/V) Sodium Azide. State: Aff - Purified State: Liquid purified Ig fraction
Concentration:	lot specific
Purification:	Purified through a protein A column; followed by peptide affinity purification.
Conjugation:	Unconjugated
Storage:	Store the antibody undiluted at 2-8°C for one month or (in aliquots) at -20°C for longer. Avoid repeated freezing and thawing.
Stability:	Shelf life: one year from despatch.
Gene Name:	fibrinogen like 1
Database Link:	Entrez Gene 2267 Human Q08830



[View online »](#)

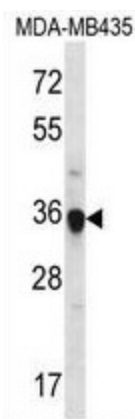
Background: Fibrinogen-like 1 is a member of a fibrinogen family. FGL1 is homologous to the carboxy terminus of the fibrinogen beta- and gamma- subunits which contains the four conserved cysteines of fibrinogens and fibrinogen related proteins. However, FGL1 lacks the platelet-binding site, cross-linking region and a thrombin-sensitive site which are necessary for fibrin clot formation. FGL1 may play a role in the development of hepatocellular carcinomas.

Synonyms: Fibrinogen-like protein 1, Hepassocin, HP-041, HFREP1, LFIRE1

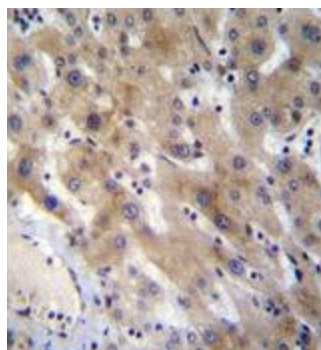
Note: Molecular Weight: 36379 Da

Protein Families: Druggable Genome, Secreted Protein

Product images:



Western blot analysis in MDA-MB435 cell line lysates (35ug/lane) using FGL1 antibody. (C-term). This demonstrates the FGL1 antibody detected the FGL1 protein (arrow).



Immunohistochemistry analysis in formalin fixed and paraffin embedded (FFPE) human liver tissue using FGL1 antibody. (C-term) followed by peroxidase conjugation of the secondary antibody and DAB staining. This data demonstrates the use of FGL1 antibody for immunohistochemistry. Clinical relevance has not been evaluated.