

## Product datasheet for **AP51663PU-N**

### FGFRL1 (N-term) Rabbit Polyclonal Antibody

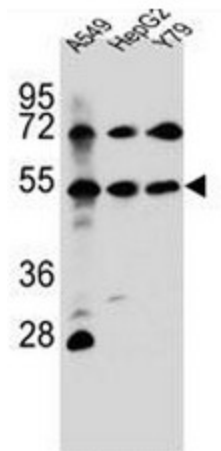
#### Product data:

Product Type:	Primary Antibodies
Applications:	IHC, WB
Recommended Dilution:	<b>ELISA:</b> 1/1000. <b>Western blot:</b> 1/100 - 1/500. <b>Immunohistochemistry:</b> 1/10 - 1/50.
Reactivity:	Human
Host:	Rabbit
Isotype:	Ig
Clonality:	Polyclonal
Immunogen:	The protein encoded by this gene is a member of the fibroblast growth factor receptor (FGFR) family, where amino acid sequence is highly conserved between members and throughout evolution. FGFR family members differ from one another in their ligand affinities and tissue distribution. A full-length representative protein would consist of an extracellular region, composed of three immunoglobulin-like domains, a single hydrophobic membrane-spanning segment and a cytoplasmic tyrosine kinase domain. The extracellular portion of the protein interacts with fibroblast growth factors, setting in motion a cascade of downstream signals, ultimately influencing mitogenesis and differentiation. A marked difference between this gene product and the other family members is its lack of a cytoplasmic tyrosine kinase domain. The result is a transmembrane receptor that could interact with other family members and potentially inhibit signaling. Multiple alternatively spliced transcript variants encoding the same isoform have been found for this gene.
Specificity:	This antibody reacts to FGFRL1.
Formulation:	PBS State: Aff - Purified State: Liquid purified Ig fraction Preservative: 0.09% (W/V) sodium azide
Concentration:	lot specific
Purification:	Affinity chromatography on Protein A
Conjugation:	Unconjugated

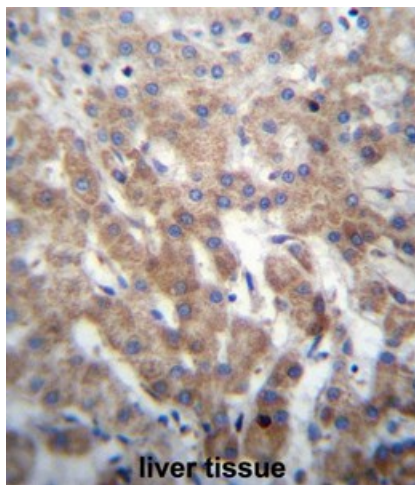


[View online »](#)

<b>Storage:</b>	Store the antibody undiluted at 2-8°C for one month or (in aliquots) at -20°C for longer. Avoid repeated freezing and thawing.
<b>Stability:</b>	Shelf life: one year from despatch.
<b>Predicted Protein Size:</b>	54537 Da
<b>Gene Name:</b>	fibroblast growth factor receptor-like 1
<b>Database Link:</b>	<a href="#">Entrez Gene 53834 Human Q8N441</a>
<b>Synonyms:</b>	FGFR-like protein, FGFR5, FHFR
<b>Protein Families:</b>	Druggable Genome, Transmembrane

**Product images:**


FGFRL1 Antibody (N-term) western blot analysis in A549, HepG2, Y79 cell line lysates (35ug/lane). This demonstrates the FGFRL1 antibody detected the FGFRL1 protein (arrow).



FGFRL1 Antibody (N-term) immunohistochemistry analysis in formalin fixed and paraffin embedded human liver tissue followed by peroxidase conjugation of the secondary antibody and DAB staining. This data demonstrates the use of FGFRL1 Antibody (N-term) for immunohistochemistry. Clinical relevance has not been evaluated.