

Product datasheet for **AP51657PU-N**

FGF22 (N-term) Rabbit Polyclonal Antibody

Product data:

Product Type:	Primary Antibodies
Applications:	WB
Recommended Dilution:	ELISA: 1/1000. Western Blot: 1/100 - 1/500.
Reactivity:	Human
Host:	Rabbit
Isotype:	Ig
Clonality:	Polyclonal
Immunogen:	KLH conjugated synthetic peptide between 25-54 amino acids from the N-terminal region of human FGF22
Specificity:	This antibody reacts to FGF22.
Formulation:	PBS State: Aff - Purified State: Liquid purified Ig fraction Preservative: 0.09% (W/V) sodium azide
Concentration:	lot specific
Purification:	Affinity chromatography on Protein A
Conjugation:	Unconjugated
Storage:	Store the antibody undiluted at 2-8°C for one month or (in aliquots) at -20°C for longer. Avoid repeated freezing and thawing.
Stability:	Shelf life: one year from despatch.
Predicted Protein Size:	19663 Da
Gene Name:	fibroblast growth factor 22
Database Link:	Entrez Gene 27006 Human Q9HCT0



[View online »](#)

Background:

The protein encoded by this gene is a member of the fibroblast growth factor (FGF) family. FGF family members possess broad mitogenic and cell survival activities and are involved in a variety of biological processes including embryonic development, cell growth, morphogenesis, tissue repair, tumor growth and invasion. The mouse homolog of this gene was found to be preferentially expressed in the inner root sheath of the hair follicle, which suggested a role in hair development. [provided by RefSeq].

Synonyms:

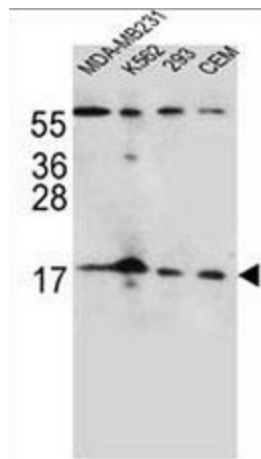
Fibroblast growth factor 22, FGF-22

Protein Families:

Secreted Protein

Protein Pathways:

MAPK signaling pathway, Melanoma, Pathways in cancer, Regulation of actin cytoskeleton

Product images:

FGF22 Antibody (N-term) western blot analysis in MDA-MB231, K562, 293, CEM cell line lysates (35ug/lane). This demonstrates the FGF22 antibody detected the FGF22 protein (arrow).