

## Product datasheet for **AP51654PU-N**

### FGF16 (N-term) Rabbit Polyclonal Antibody

#### Product data:

Product Type:	Primary Antibodies
Applications:	IHC, WB
Recommended Dilution:	<b>ELISA:</b> 1/1000. <b>Western Blot:</b> 1/100 - 1/500. <b>Immunohistochemistry on paraffin sections:</b> 1/10 - 1/50.
Reactivity:	Human, Mouse
Host:	Rabbit
Isotype:	Ig
Clonality:	Polyclonal
Immunogen:	KLH conjugated synthetic peptide between 29-58 amino acids from the N-terminal region of human FGF16
Specificity:	This antibody reacts to FGF16.
Formulation:	PBS State: Aff - Purified State: Liquid purified Ig fraction Preservative: 0.09% (W/V) sodium azide
Concentration:	lot specific
Purification:	Affinity chromatography on Protein A
Conjugation:	Unconjugated
Storage:	Store the antibody undiluted at 2-8°C for one month or (in aliquots) at -20°C for longer. Avoid repeated freezing and thawing.
Stability:	Shelf life: one year from despatch.
Predicted Protein Size:	23759 Da
Gene Name:	fibroblast growth factor 16
Database Link:	<a href="#">Entrez Gene 80903 Mouse</a> <a href="#">Entrez Gene 8823 Human</a> <a href="#">O43320</a>



[View online »](#)

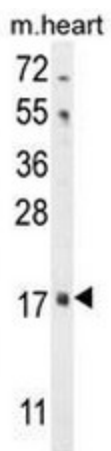
**Background:** The protein encoded by this gene is a member of the fibroblast growth factor (FGF) family. FGF family members possess broad mitogenic and cell survival activities, and are involved in a variety of biological processes, including embryonic development, cell growth, morphogenesis, tissue repair, tumor growth and invasion. The rat homolog is predominantly expressed in embryonic brown adipose tissue and has significant mitogenic activity, which suggests a role in proliferation of embryonic brown adipose tissue.

**Synonyms:** Fibroblast growth factor 16, FGF-16

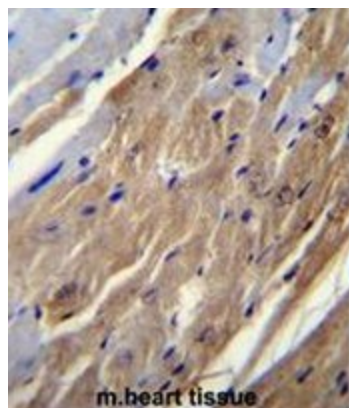
**Protein Families:** Secreted Protein

**Protein Pathways:** MAPK signaling pathway, Melanoma, Pathways in cancer, Regulation of actin cytoskeleton

**Product images:**



FGF16 Antibody (N-term) western blot analysis in mouse heart tissue lysates (35ug/lane). This demonstrates the FGF16 antibody detected the FGF16 protein (arrow).



FGF16 Antibody (N-term) immunohistochemistry analysis in formalin fixed and paraffin embedded mouse heart tissue followed by peroxidase conjugation of the secondary antibody and DAB staining. This data demonstrates the use of FGF16 Antibody (N-term) for immunohistochemistry. Clinical relevance has not been evaluated.